

**MESILLA VALLEY METROPOLITAN PLANNING ORGANIZATION**

**RESOLUTION NO. 23-09**

**A RESOLUTION AMENDING *MOBILITY 2045***

The Mesilla Valley Metropolitan Planning Organization (MPO) Policy Board is informed that:

**WHEREAS**, the Mesilla Valley Metropolitan Planning Organization (MPO) is the transportation planning agency for the City of Las Cruces, the Town of Mesilla, and the urbanized area of central Doña Ana County; and

**WHEREAS**, Title 23 CFR §450.322 requires that all MPO's throughout the country adopt a minimum 20-year Metropolitan Transportation Plan for their respective jurisdictions; and

**WHEREAS**, the Mesilla Valley MPO adopted *Mobility 2045* on July 15, 2020; and

**WHEREAS**, the MPO has received a request to declassify Zertuche Lane from the Functional Classification Map, a component of *Mobility 2045*; and

**WHEREAS**, both Doña Ana County and the City of Las Cruces concur with this request; and

**WHEREAS**, the Bicycle and Pedestrian Facilities Advisory Committee recommended approval of this amendment at their April 18, 2023 meeting; and

**WHEREAS**, the Technical Advisory Committee recommended approval at their May 4, 2023 meeting.

**NOW, THEREFORE**, be it resolved by the Policy Board of the Mesilla Valley Metropolitan Planning Organization:

**(I)**

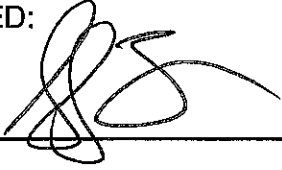
**THAT** the Mesilla Valley Metropolitan Planning Organization hereby APPROVES the requested amendments to *Mobility 2045*, as shown in Exhibit "A" attached hereto and made a part of this Resolution.

(II)

THAT staff is directed to take appropriate and legal actions to implement this Resolution.

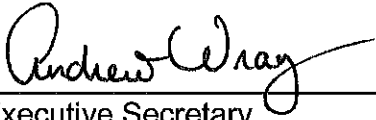
**DONE** and **APPROVED** this 10th day of May, 2023.

APPROVED:



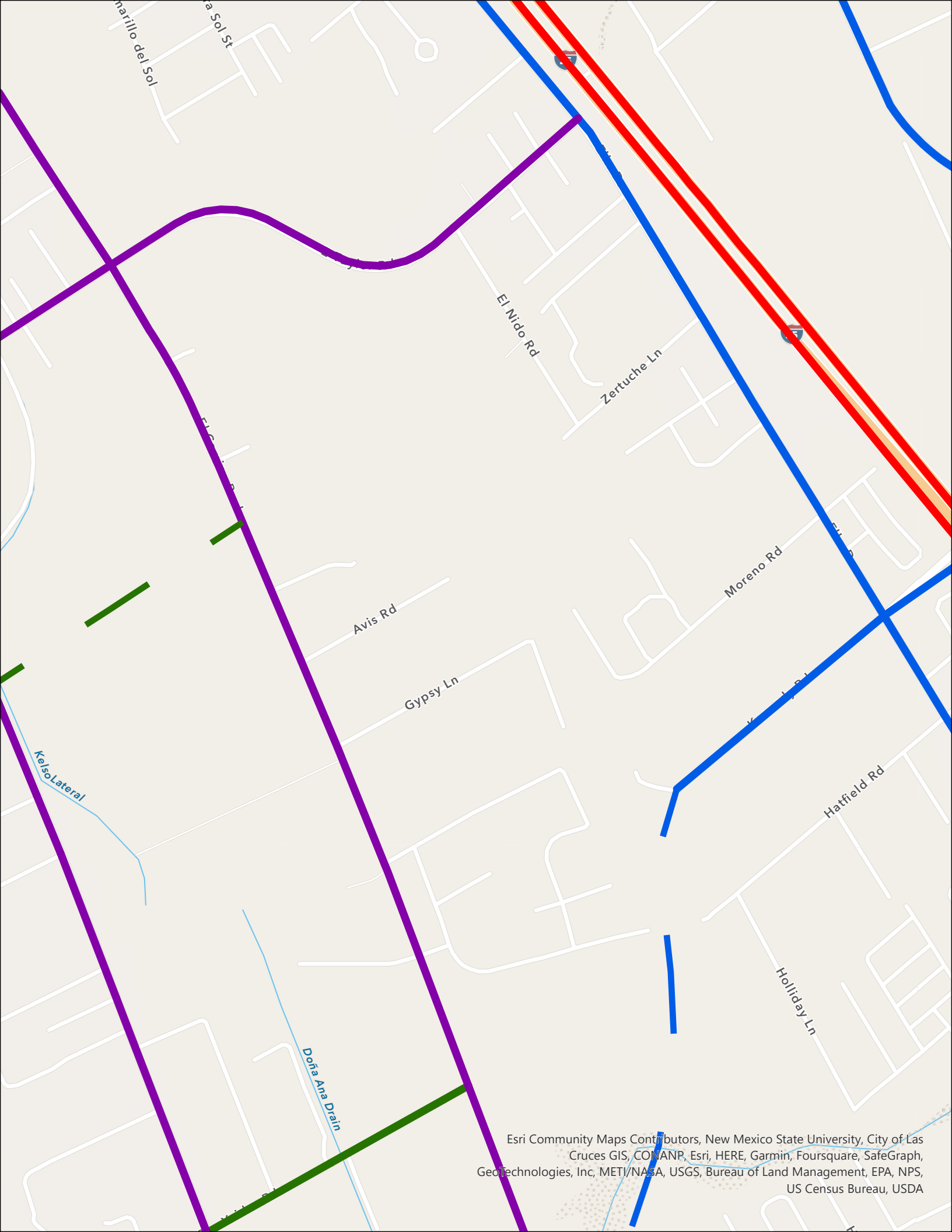
\_\_\_\_\_  
Chair

ATTEST:



\_\_\_\_\_  
Executive Secretary

Motion By:	Vice-Chair Graham
Second By:	Councilor Corran
VOTE:	
Chair Johnson-Burick	Yes
Vice-Chair Graham	Yes
Mayor Barraza	Yes
Councilor Bencomo	Absent
Councilor Corran	Yes
Dist. Eng. NMDOT D1	Yes
Trustee Merrick	No
Commissioner Murillo	Present
Commissioner Sanchez	Yes
Commissioner Schaljo-Hernandez	Yes



Esri Community Maps Contributors, New Mexico State University, City of Las Cruces GIS, CONANP, Esri, HERE, Garmin, Foursquare, SafeGraph, GeoTechnologies, Inc, METI/NASA, USGS, Bureau of Land Management, EPA, NPS, US Census Bureau, USDA