



METROPOLITAN PLANNING ORGANIZATION

SERVING LAS CRUCES, DOÑA ANA COUNTY, AND MESILLA

P.O. BOX 20000 | LAS CRUCES NM | 88004
PHONE (575) 528-3222 | FAX (575) 528-3155
<http://mvmpo.las-cruces.org>

MESILLA VALLEY METROPOLITAN PLANNING ORGANIZATION TECHNICAL ADVISORY COMMITTEE

AGENDA

The following is the agenda for the Mesilla Valley Metropolitan Planning Organization's (MPO) Technical Advisory Committee meeting to be held on **March 3, 2016 at 4:00 p.m.** in the **Doña Ana County Commission Chambers, 845 Motel**, Las Cruces, New Mexico. Meeting packets are available on the [Mesilla Valley MPO website](http://mvmpo.las-cruces.org).

The Mesilla Valley MPO does not discriminate on the basis of race, religion, sex, sexual orientation, gender identity, color, ancestry, serious medical condition, national origin, age, or disability in the provision of services. The Mesilla Valley MPO will make reasonable accommodation for a qualified individual who wishes to attend this public meeting. Please notify the Mesilla Valley MPO at least 48 hours before the meeting by calling 528-3043 (voice) or 1-800-659-8331 (TTY) if accommodation is necessary. This document can be made available in alternative formats by calling the same numbers list above. *Este documento está disponible en español llamando al teléfono de la Organización de Planificación Metropolitana de Las Cruces: 528-3043 (Voz) o 1-800-659-8331 (TTY).*

1. **CALL TO ORDER** _____ **Chair**
2. **APPROVAL OF AGENDA** _____ **Chair**
3. **APPROVAL OF MINUTES** _____ **Chair**
 - 3.1. February 4, 2016 _____
4. **PUBLIC COMMENT** _____ **Chair**
5. **DISCUSSION ITEMS** _____
 - 5.1. Presentation on the Missouri Ave./Roadrunner Pkwy. Study Corridor _____ **MPO Staff**
 - 5.2. Presentation on the Multi-Use Trail Loop _____ **MPO Staff**
6. **COMMITTEE and STAFF COMMENTS** _____
 - 6.1. City of Las Cruces, Doña Ana County, Town of Mesilla, Las Cruces Public Schools, RoadRUNNER Transit, and SCRTD Project Updates _____ **Jurisdictional Staff**
 - 6.2. NMDOT Projects Update _____ **NMDOT Staff**
 - 6.3. MPO Staff Projects Update _____ **MPO Staff**
7. **PUBLIC COMMENT** _____ **Chair**
8. **ADJOURNMENT** _____ **Chair**

1 **MESILLA VALLEY METROPOLITAN PLANNING ORGANIZATION**
2 **TECHNICAL ADVISORY COMMITTEE**
3

4 The following are minutes for the meeting of the Technical Advisory Committee of the
5 Mesilla Valley Metropolitan Planning Organization (MPO) which was held February 4,
6 2016 at 4:00 p.m. in Commission Chambers at Dona Ana County Government Building,
7 845 Motel Blvd., Las Cruces, New Mexico.
8

9 **MEMBERS PRESENT:** John Gwynne (DAC Flood Commission)
10 Mike Bartholomew (CLC Transit)
11 Larry Shannon (Town of Mesilla)
12 Harold Love (NMDOT)
13 Eric Chavarria - proxy for Jolene Herrera (NMDOT)
14 Debbie Lujan (Town of Mesilla)
15 Rene Molina (DAC Engineering)
16 Todd Gregory (LCPS)
17 Tony Trevino (CLC Public Works)
18 SooGyu Lee (CLC)
19

20 **MEMBERS ABSENT:** Stephen Howie (EBID)
21 David Armijo (SCRTD)
22 Bill Childress (BLM)
23 Dale Harrell (NMSU)
24

25 **STAFF PRESENT:** Tom Murphy (MPO Staff)
26 Andrew Wray (MPO Staff)
27 Michael McAdams (MPO Staff)
28 Zach Tarachi (MPO Staff)
29

30 **OTHERS PRESENT:** Becky Baum, RC Creations, LLC, Recording Secretary
31

32 **1. CALL TO ORDER (4:00 p.m.)**
33

34 Gwynne: Good afternoon. This is the February 4th meeting of the Metropolitan
35 Planning Organization for Mesilla Valley. Let's get started. I believe we
36 have a quorum.
37

38 **2. APPROVAL OF AGENDA**
39

40 Gwynne: Let's start with, with Approval of, of Agenda.
41

42 Wray: Thank you Mr. Chair. We do have a note that I left the Election of Officers
43 as an item on the agenda in error, so we'll be striking that but other than
44 that, that's the only change to the agenda.
45

46 Gwynne: Okay. So that then will then renumber everything else, is that correct?

1
2 Wray: Yes.

3
4 Gwynne: Okay. Let's go ahead and start with introductions before we go any
5 further, before we do any motions or anything else. So let's start it all the
6 way to the right. Please give your name and who you represent please.
7

8 Lee: SooGyu Lee, City of Las Cruces Traffic Engineering.
9

10 Love: Harold Love, New Mexico DOT.
11

12 Chavarria: Aaron Chavarria, New Mexico DOT.
13

14 Molina: Rene Molina, Dona Ana County.
15

16 Bartholomew: Mike Bartholomew, City of Las Cruces RoadRUNNER Transit.
17

18 Gwynne: John Gwynne, Dona Ana County Flood Commission.
19

20 Trevino: Tony Trevino, City of Las Cruces Public Works.
21

22 Lujan: Debbie Lujan, Town of Mesilla.
23

24 Shannon: Larry Shannon, Town of Mesilla.
25

26 Gwynne: Thank you very much. I'd like to entertain a motion at this point to approve
27 the agenda as, as amended.
28

29 Bartholomew: I, I make that motion that we approve the agenda.
30

31 Love: Second.
32

33 Gwynne: It's been moved and seconded. All in favor?
34

35 MOTION PASSES UNANIMOUSLY.
36

37 **3. APPROVAL OF MINUTES**
38

39 **4.1 January 7, 2016**
40

41 Gwynne: Okay and let's move on to the Approval of the Minutes. Has everyone had
42 a chance to go through the minutes? I think we've got a couple of, of
43 things that we need to look at. Let's see. Mike had the one about the
44 date.
45

1 Bartholomew: I don't know if there was an actual error in the recording of the minutes. I
2 just think that the speaker had an error; it was from Mr. Armijo, from the
3 RT, he was talking about the startup of the RTD. He said the second
4 week of October and he, I just, it just, as clarification it was the second, it's
5 the second week of February I'm sure he meant. Also I had a question of
6 the MPO just as a, in the, in the minutes it reminded me that what was the,
7 with the University Avenue corridor, was that information about the traffic
8 study of the school added in to this, or comment about it into the study?
9

10 Wray: I believe so. Yes.

11
12 Bartholomew: Okay. Thank you.

13
14 Gwynne: Okay. Do we have any other comments or from the, from the, from the
15 Board about the minutes? I'll entertain a motion that we approve them as
16 amended.
17

18 Bartholomew: I, I move that we approve the, the minutes as amended.
19

20 Shannon: I second.
21

22 Gwynne: It's been moved and, and seconded. All those in favor?
23

24 MOTION PASSES UNANIMOUSLY.
25

26 Gwynne: Motion carries.
27

28 **4. PUBLIC COMMENT**

29
30 Gwynne: Do we have any public comment today? I don't see a rousing bunch of
31 public so I guess that says no.
32

33 **5. ACTION ITEMS**

34 35 **5.1 Amendments to the 2016-2021 Transportation Improvement Program**

36
37 Gwynne: Let's move on to number five; Action Items, Amendments to the 2016-
38 2021 Transportation Improvement Plan. And that's from staff.
39

40 ANDREW WRAY GAVE PRESENTATION.
41

42 Bartholomew: Thank you. And that's pretty much what it is. It's an obligated Federal
43 Fiscal Year '15 and it's related to the fact that not all of the transportation
44 funding was released until the last moment at, I believe in August for us to
45 apply for it in time. So that was why it had to be rolled over, carried over.
46

1 Gwynne: Okay. Are there any questions from, from Committee? Hearing none I
2 would, I'd entertain a motion to recommend approval to the Policy
3 Committee for the, for the amendment to the TIP.

4
5 Love: So moved.

6
7 Molina: Second.

8
9 Gwynne: It's been moved and seconded. Do I have any other comments? All those
10 in favor?

11
12 MOTION PASSES UNANIMOUSLY.

13
14 Gwynne: Opposed? Motion carries.

15
16 **6. DISCUSSION ITEMS**

17
18 **6.1 Overview of Fixing America's Surface Transportation Act (FAST Act)**

19
20 Gwynne: Okay. The next item, item number six is an Overview of Fixing America's
21 Surface Transportation Act, the FAST Act by staff.

22
23 ANDREW WRAY GAVE PRESENTATION.

24
25 Gwynne: Are there any questions or comments from the Commission? Not seeing
26 any. Thank you very much Andrew.

27
28 **7. COMMITTEE AND STAFF COMMENTS**

29
30 **7.1 City of Las Cruces, Dona Ana County, Town of Mesilla, Las Cruces
31 Public Schools, RoadRUNNER Transit, SCRTD Project Updates**

32
33 Gwynne: Let's move on to the last item which is going to be the comments from
34 each, comments and updates from each of the, each of the various
35 jurisdictions. Let's start with the City of Las Cruces.

36
37 Trevino: The Las Cruces Dam Trails which is LC00190, 180 I apologize. The
38 contracts have been signed by the contractor and the preconstruction
39 packet has been submitted. Once the packet, we're just waiting for the
40 packet to be approved by the Purchasing Department and a pre-con
41 should be scheduled within the next ten days or so.

42 The El Paseo Road safety project, contracts are being executed at,
43 at this time. The contractor has submitted the preconstruction packet and
44 it is being reviewed. Once the preconstruction packet has been verified
45 and the contract's fully executed the preconstruction meeting will be
46 scheduled. And that is all.

1
2 Gwynne: Okay. Thank you. Dona Ana County.

3
4 Molina: For project G10030, that's Dripping Springs, it's still in construction again.
5 You will like, see some delays as you progress through there. Project is
6 on schedule and is anticipated to be done somewhere in the April-May
7 time frame.

8 Project LC00110, working on right-of-way and environmental on
9 that project. We got comments are from DOT and so we're working
10 through that. Thanks.

11
12 Gwynne: Thank you. Town of Mesilla.

13
14 Lujan: Town of Mesilla doesn't have anything at this time.

15
16 Gwynne: Okay. Las Cruces Public Schools.

17
18 Gregory: All right. Yes. We're still doing our pedestrian and bicycle safety
19 education at the third grade level at school by school. We're still continue
20 our, our walk to school bus at our 18 elementary schools. We're still
21 working with updating the action plan with City staff and some of the
22 coalition members and we're also working on a presentation for the
23 National Safe Routes to School Conference in April. Ashleigh Curry will
24 be attending that. We're still having our coalition meetings, having great
25 discussion and moving forward. One of the other highlights that I noticed
26 was, at, was that some of the schools had put on a "warm and cozy walk"
27 with the students. They were encouraged to bring in you know knits and
28 mittens and scarves for the schools and those were donated to school
29 children there or to the local charities. And we're also doing a Scorpion
30 Bike Club at Picacho Middle School which is encouraging the middle
31 school students to properly ride the bikes safely. And I think that's it.

32
33 Gwynne: Thank you. RoadRUNNER Transit.

34
35 Bartholomew: In addition to the action that was taken regarding transit project TL0013
36 we'll, I'll need to do another request for the next quarter to make, change
37 that even a little bit further. TL0010 and TL0013 are actually the, the
38 formula funding we get and it's just the distribution between the, you know
39 what we do for operating in, in one project number and capital projects in
40 the other. And based on how the budgeting is going we're just finishing
41 that budgeting process in the City. I need to allocate more towards the
42 operating side so I'll be reducing the amount on the capital side. The total
43 amount between those two projects will remain the same though.

44
45 Gwynne: Okay. Thank you. How about the South Central Regional Transit District?
46

1 Wray: Their representative left.

2
3 Gwynne: Okay. Thank you.

4 5 **7.2 NMDOT Projects Update**

6
7 Gwynne: Let's move on to NMDOT.

8
9 Chavarria: On control number 1100470 which is our US-70 and Main Street, it's been
10 substantially complete since November 2015. We're still working on some
11 punch list items.

12 On control number LC00100 which is I-25 over Missouri Avenue,
13 we are, they're working on the northbound bridge, probably doing a deck
14 placement next week or so. This project should be completed by June of
15 this year.

16 Control number 1100830 which is I-10 over Union, that one they
17 are working on the eastbound bridges and it should be completed by May
18 of this year.

19 Control number 9900362 is our exit, I-10 exit 135 interchange
20 lighting project, it was completed in, in December of 2015 and they're just
21 working out some punch list items on that one.

22 Control number LC00150 which is from mile marker, on I-10 mile
23 marker 133 to 146, it's a mill and inlay full width of the roadway project on
24 I-10. That one has a mandatory completion date of November 2016.

25 And then we have some new projects coming up: Control number
26 1100620, that's our I-10 from mile marker 146 to the Texas line and we're
27 going to be doing a mill and inlay on the two outside lanes. That one was
28 just, we, a start day hasn't been determined and it's got a contract time of
29 six months. And we have some striping projects going I-25 and I-10,
30 control number 9900365 and 9900366 and we've just been doing all the,
31 redoing all the striping on the interstates and that's district-wide and that's
32 going to be a mandatory completion date of November 2016. And then
33 we have a bridge on the NM-28 and then a bridge on NM-186 which is
34 O'Hare Road, we're going to be replacing them. We still don't have a, a
35 start date on those but it's going to be a four-month project. And that's it.

36
37 Gwynne: Okay. Thank you.

38 39 **7.3 MPO Staff Projects Update**

40
41 Gwynne: Let's move on to MPO staff.

42
43 Wray: Yes. Thank you Mr. Chair. We're continuing to advance in the work on
44 the Missouri study corridor. We are looking to bring the work that we've
45 done so far to this Committee, March meetings. We agreed on March
46 didn't we? So we'll be bringing that to this Committee next month so

1 everyone mark a space on your calendars and be here. That can, I
2 believe that is all that we have for this month.
3

4 **8. PUBLIC COMMENT**

5
6 Gwynne: Okay. Let's move on to item number eight: Public Comment. Seeing
7 none.
8

9 **9. ADJOURNMENT (4:25 p.m.)**

10
11 Gwynne: I would entertain a motion for adjournment.
12

13 Bartholomew: Just before we go, it, was there a sign-up list for the Committee
14 Members? It didn't, I didn't come by me.
15

16 Wray: It's up there.
17

18 Gwynne: There is.
19

20 Bartholomew: Okay. I, I move that we adjourn.
21

22 Gwynne: A second? Is there a second?
23

24 Trevino: Second that.
25

26 Gwynne: It's been moved and seconded. All in favor?
27

28 MOTION PASSES UNANIMOUSLY.
29

30 Gwynne: We're adjourned. Thank you all.
31
32
33
34
35

36 Chairperson
37
38



METROPOLITAN PLANNING ORGANIZATION

SERVING LAS CRUCES, DOÑA ANA COUNTY, AND MESILLA

P.O. BOX 20000 | LAS CRUCES NM | 88004

PHONE (575) 528-3222 | FAX (575) 528-3155

<http://mvmmpo.las-cruces.org>

**MESILLA VALLEY METROPOLITAN PLANNING ORGANIZATION
TECHNICAL ADVISORY COMMITTEE
DISCUSSION FORM FOR THE MEETING OF March 3, 2016**

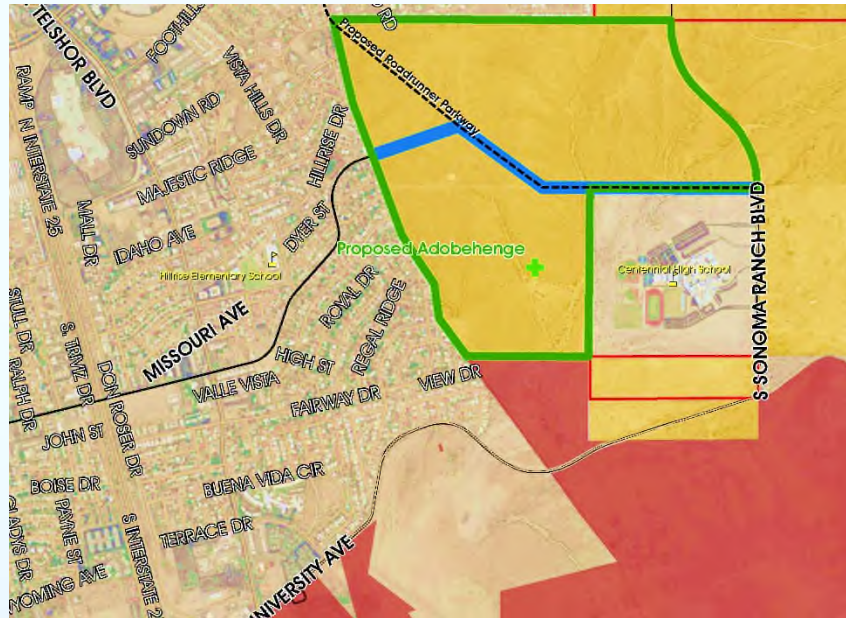
AGENDA ITEM:

5.1 Presentation on the Missouri Ave./Roadrunner Pkwy. Study Corridor

DISCUSSION:

Bohannon-Huston Staff will give a presentation on the ongoing Missouri Ave./Roadrunner Pkwy Study Corridor.

Missouri Avenue Corridor Study



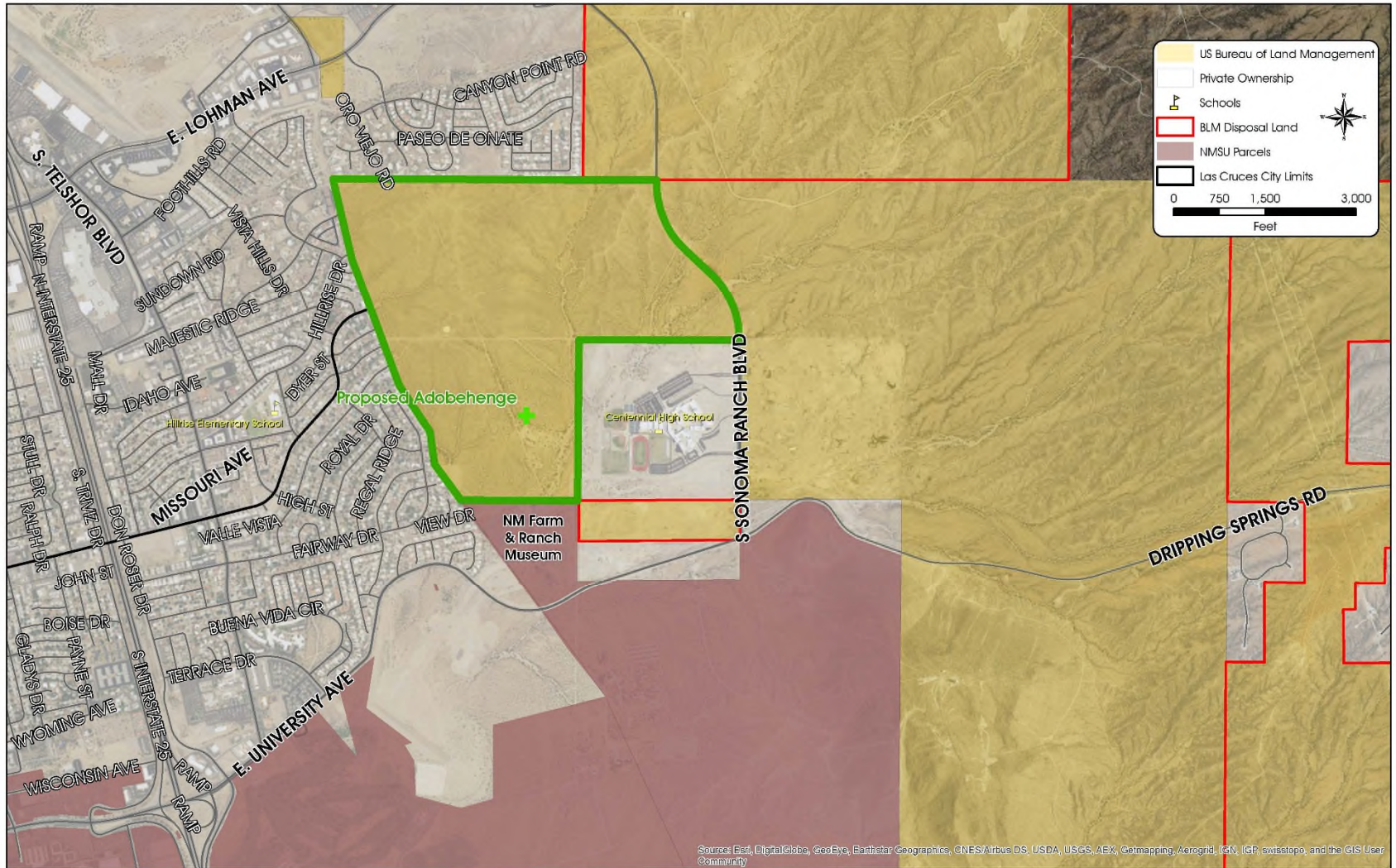
Technical Advisory Meeting

March 3, 2016

Missouri Avenue Corridor Study

- ▲ Study Area
- ▲ Planning Process
- ▲ Purpose and Need
- ▲ Project Team / Stakeholders
- ▲ Alternatives
- ▲ Next Steps

Study Area Map



Planning Process

- ▲ FHWA Planning Funds
- ▲ NMDOT Location Study Procedures Phase A
- ▲ Plan and Recommendations will be used to request funding
- ▲ Environmental, Design, and Construction Ahead

NMDOT Location Study Process

Phase A

Initial Evaluation of Alternatives

Establish Purpose & Need
Establish Existing Conditions
Identify Potential Alternatives
Initial Evaluation of Alternatives

Phase B

Detailed Evaluation of Alternatives

Engineering Investigations
Environmental Investigations
Conceptual Design
Detailed Evaluation of Alternatives

Phase C

Environmental

Issues Identification
Alternative Solutions
Environmental Investigations
Environmental Documentation

Public Outreach

NEPA Compliance

Purpose and Need

The **purpose** of the **Missouri Avenue Corridor Study** is to provide additional east/west multi-modal connectivity from Missouri Avenue or Roadrunner Parkway across vacant land to Sonoma Ranch Boulevard.

The **NEED** is based on the following:

- ▲ Lack of **network connectivity** in this area of Las Cruces
- ▲ Lack of **pedestrian and bicycle facilities** in the area

Project Team

- ▲ Mesilla Valley MPO
- ▲ NMDOT
- ▲ City of Las Cruces
- ▲ Doña Ana County
- ▲ Bureau of Land Management
- ▲ Las Cruces Public Schools
- ▲ NM Farm and Ranch Museum

Met in August of 2015 / September 2015 / January 2016

Stakeholder Input

▲ New Mexico Farm and Ranch

- No conflict
- Supports access to Museum
- Appreciate bicycle/pedestrian facilities

▲ Adobehenge

- Could connect bicycle/pedestrian facilities
- No conflict



Stakeholder Input

▲ Las Cruces Public Schools

- No immediate need for additional roadway access
- Would require additional traffic management
- Appreciate the bicycle/pedestrian access for students



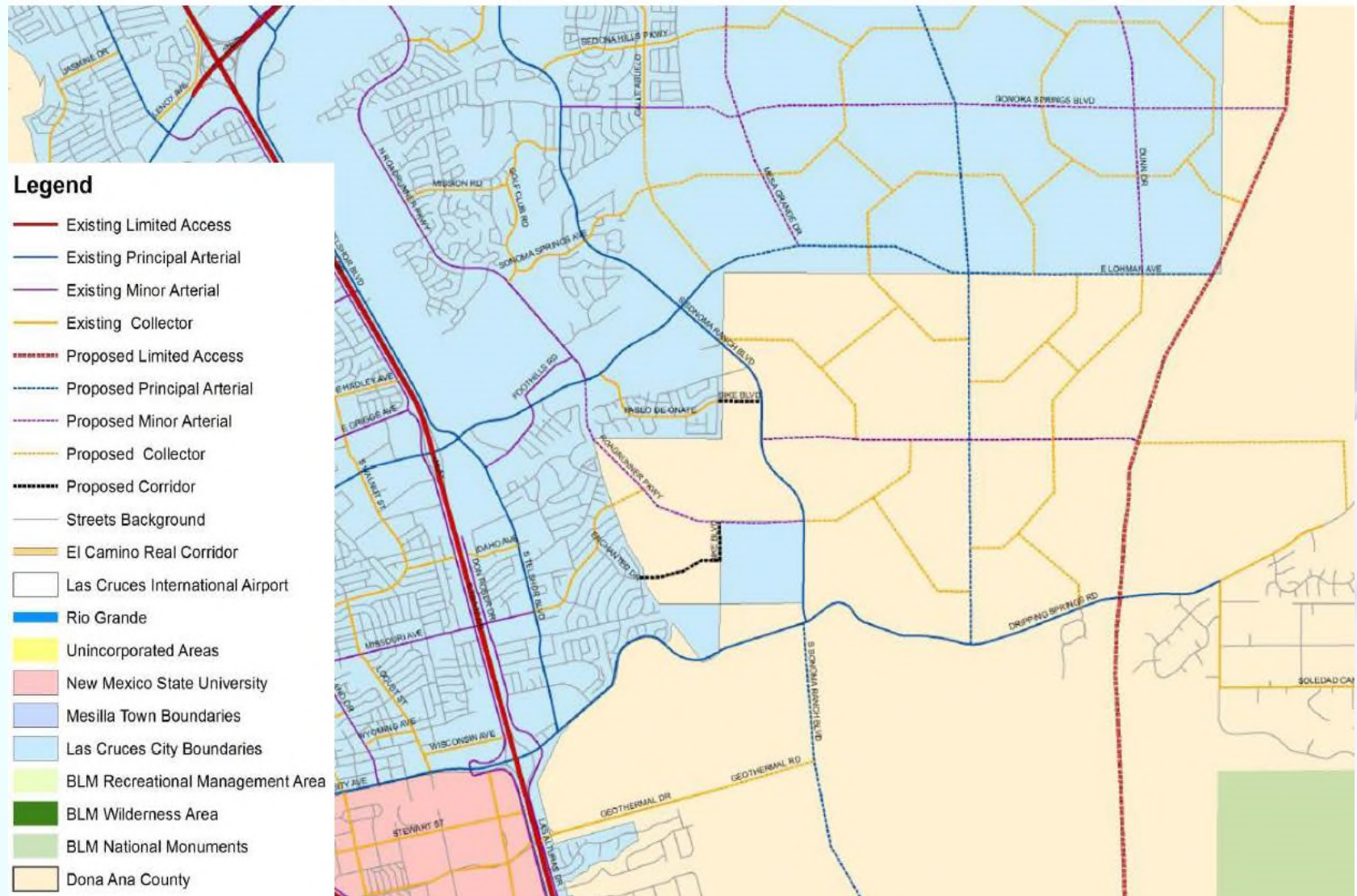
Opportunities

- ▲ Multi-modal facilities
- ▲ Network Connectivity
- ▲ Supports NMFR
- ▲ Support from BLM
- ▲ Trail connection with Adobehenge

Challenges

- ▲ Potential conflicts with ATV's on vacant land
- ▲ BLM land
- ▲ Topography/drainage
- ▲ Lack of funding

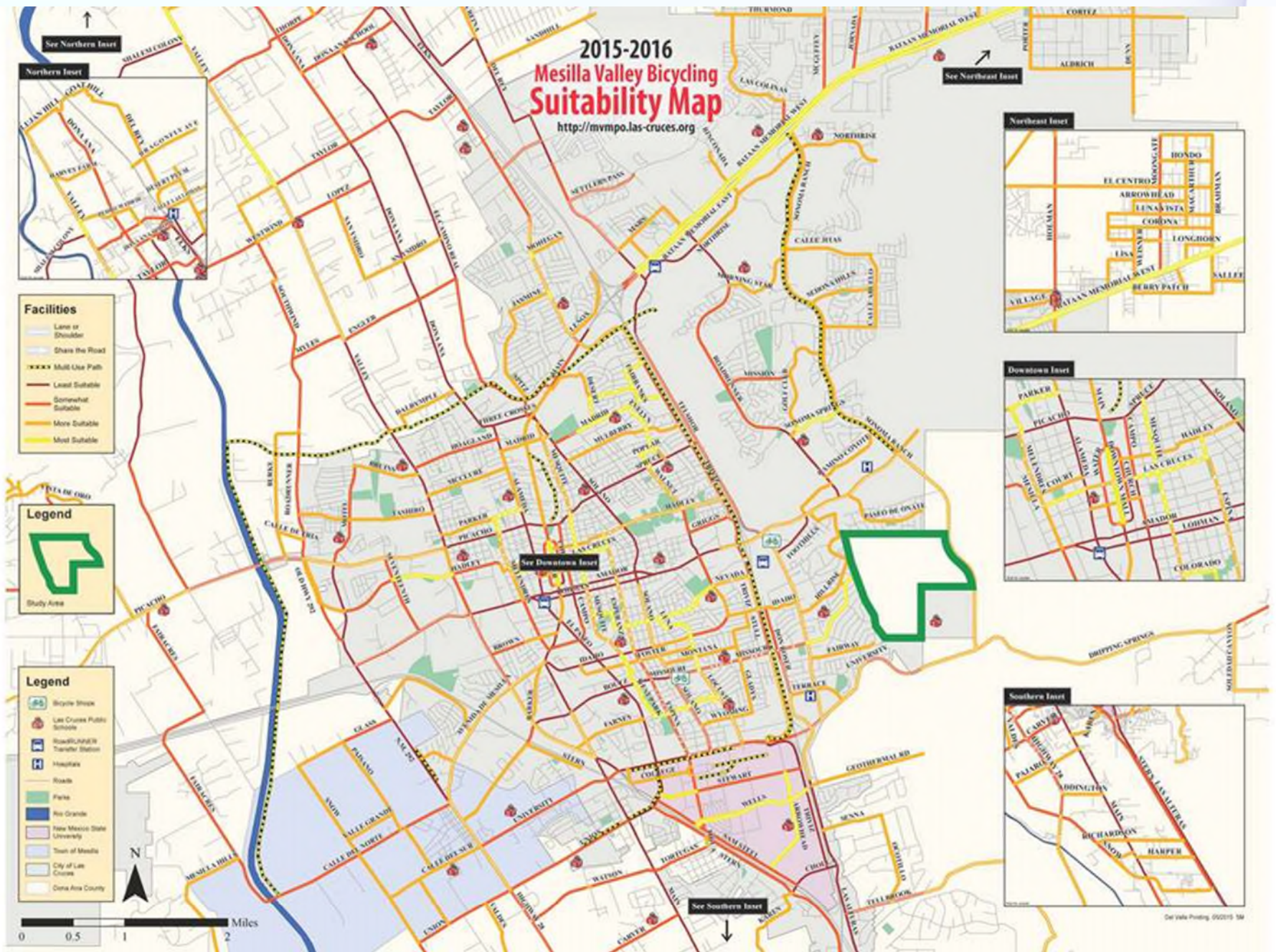
Missouri Avenue Corridor Mesilla Valley MPO MTP Project Map



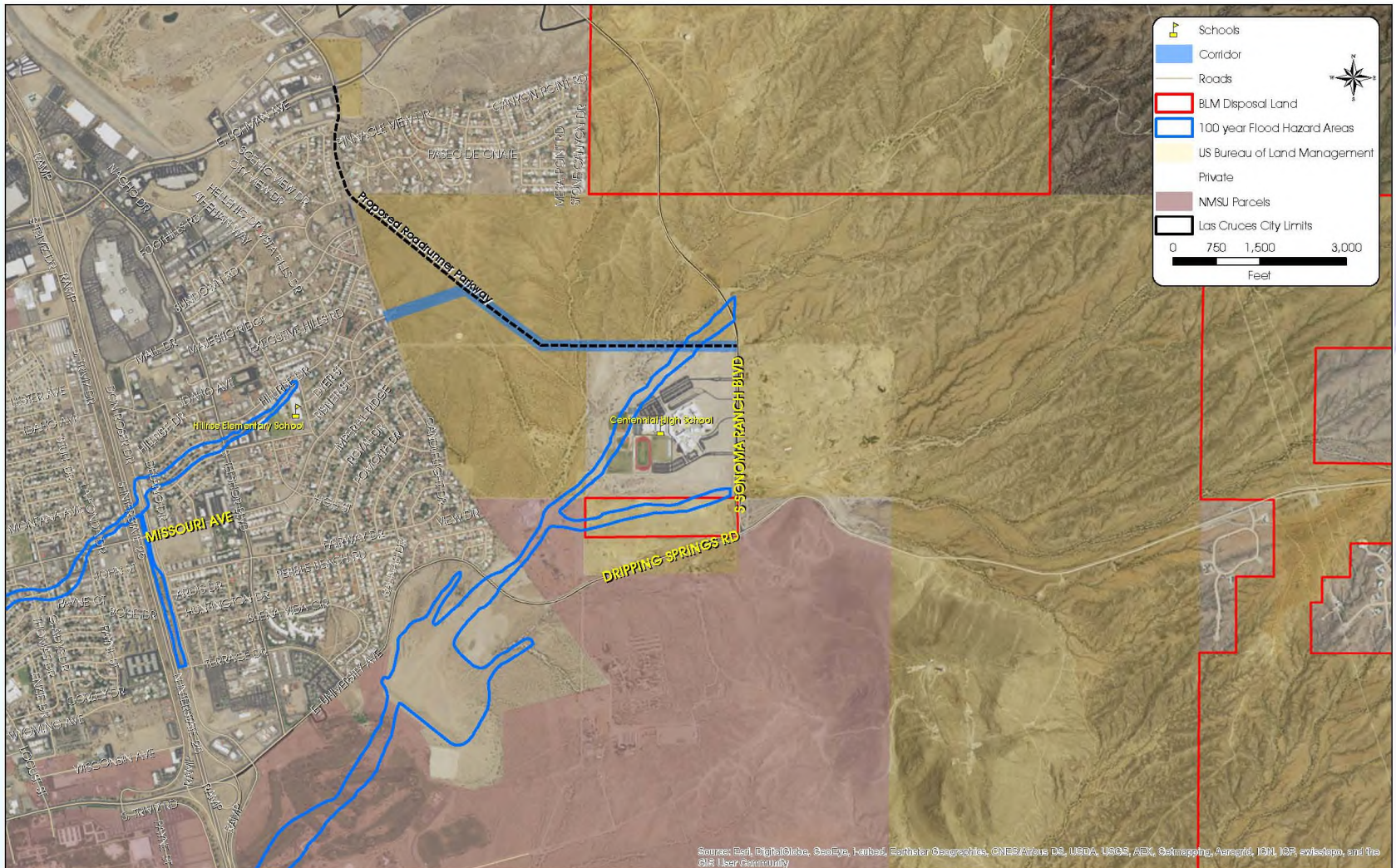
Missouri Avenue Corridor

Mesilla Valley MPO Bicycle System Priorities Plan





Environmental Issues



Potential Alternatives to be Considered

▲ Roadway Typical

- 2 travel lanes / bicycle lanes / multi-use trail

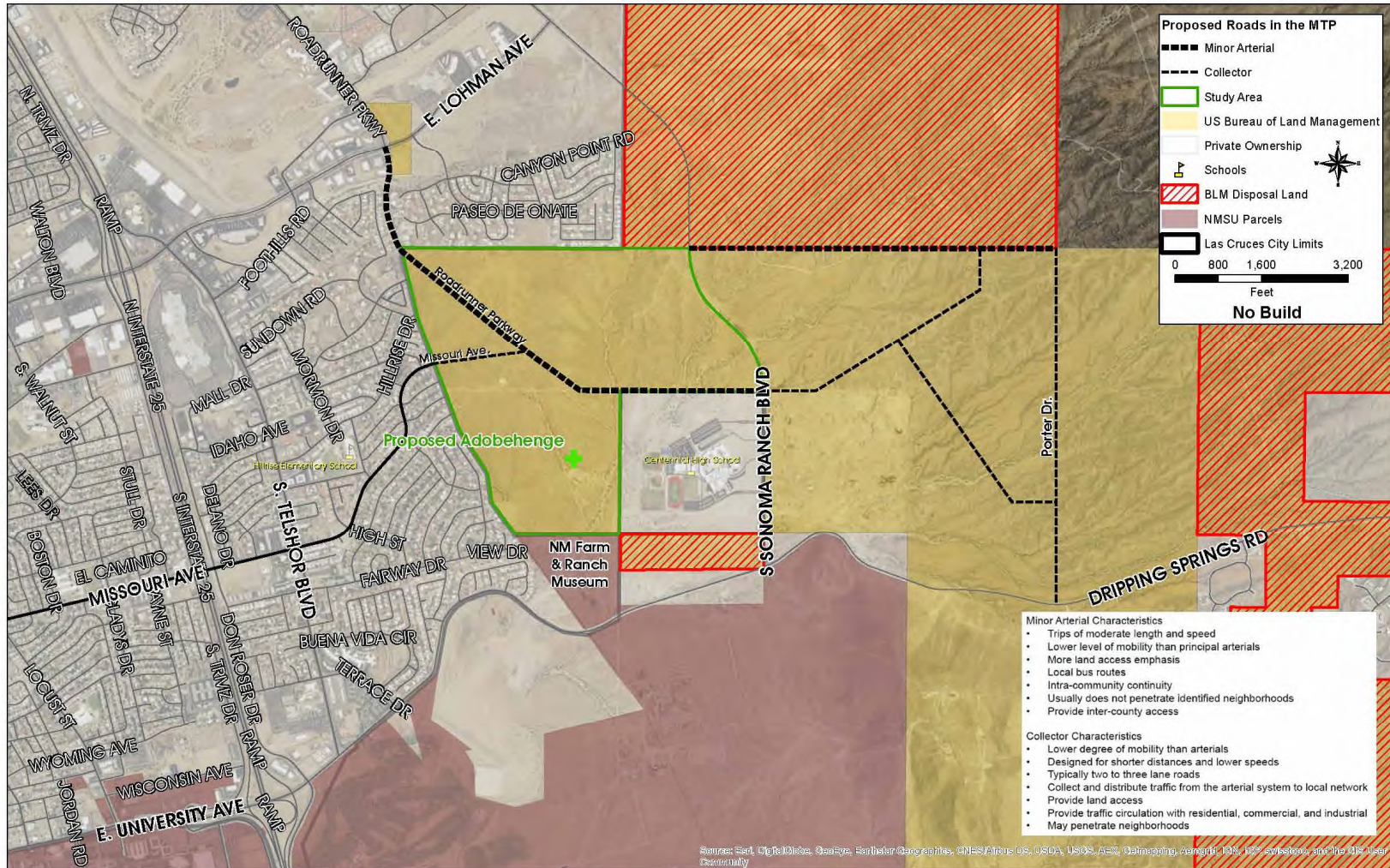
▲ Bicycle Boulevard

- Trail to accommodate bicycles and pedestrians

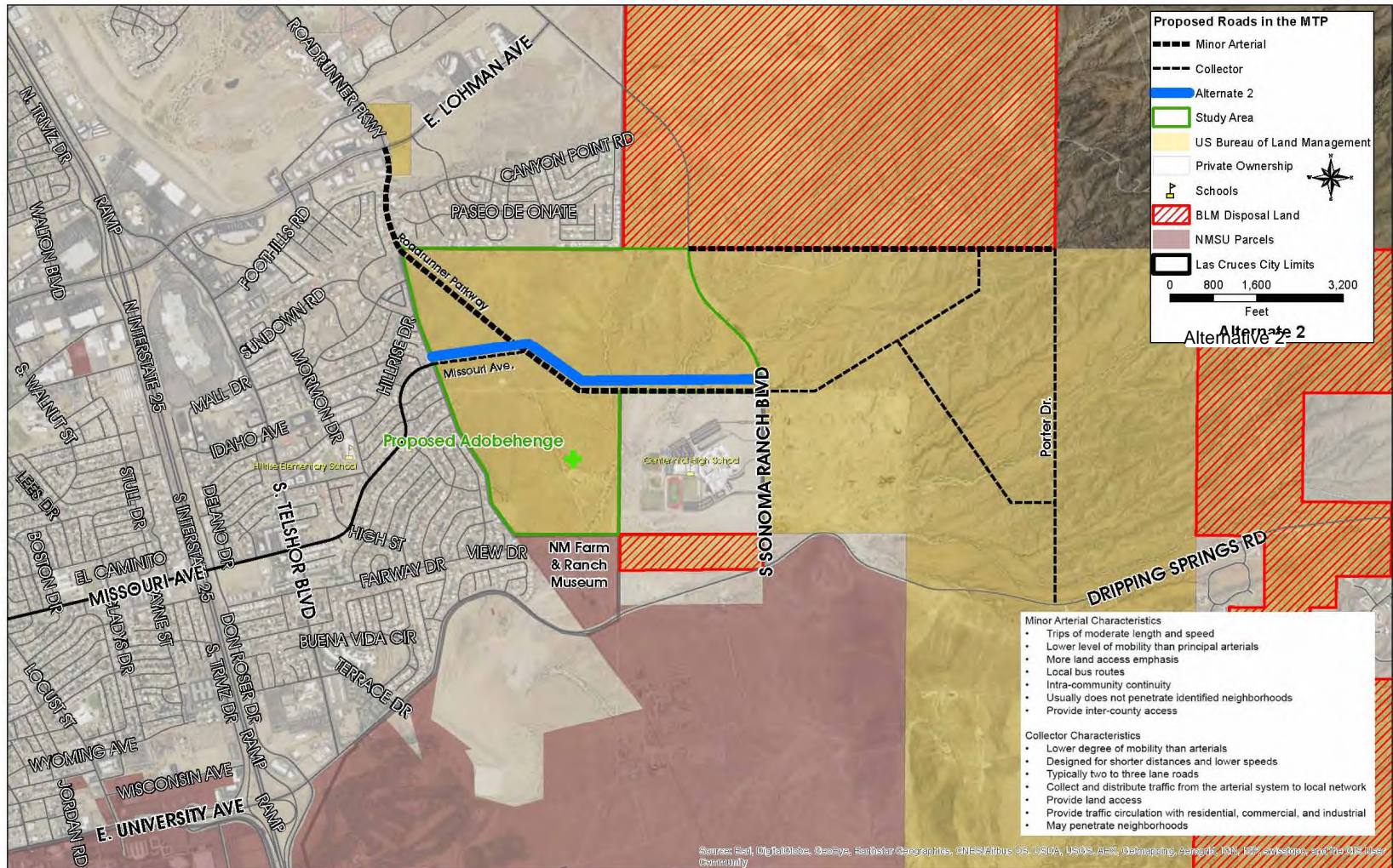
▲ No Build

- Do nothing at this time

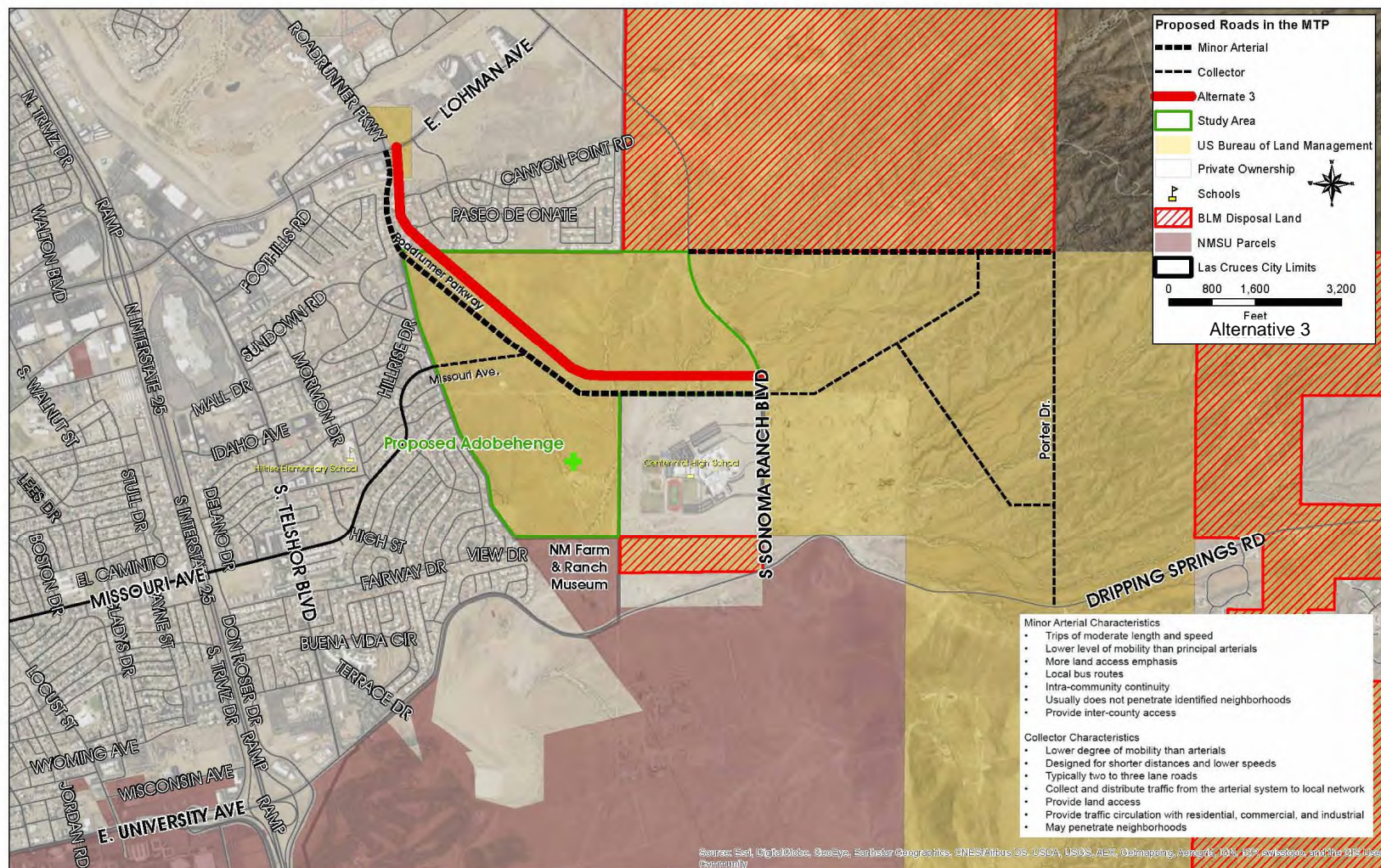
Alternative 1: No Build



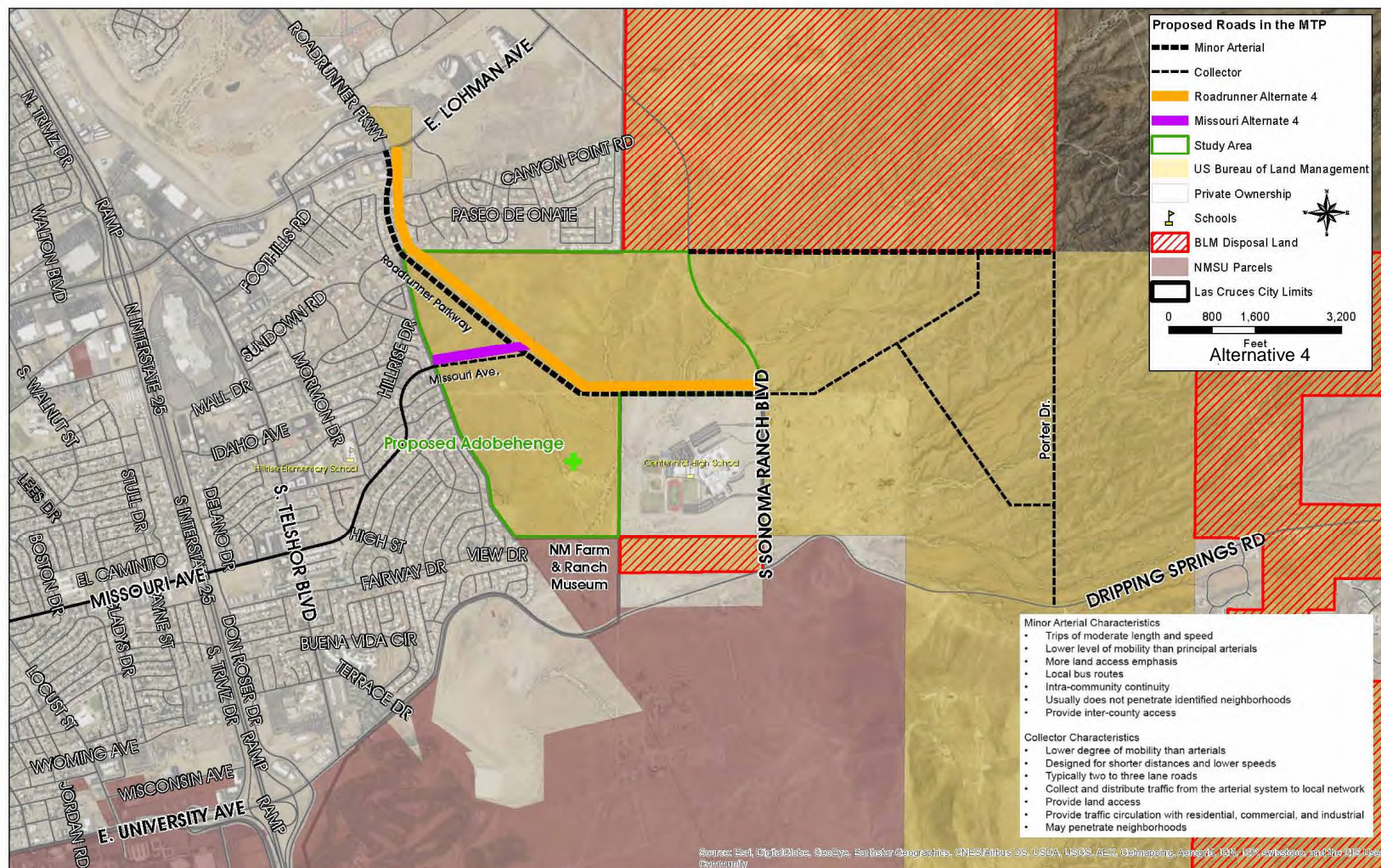
Alternative 2: Missouri Extension



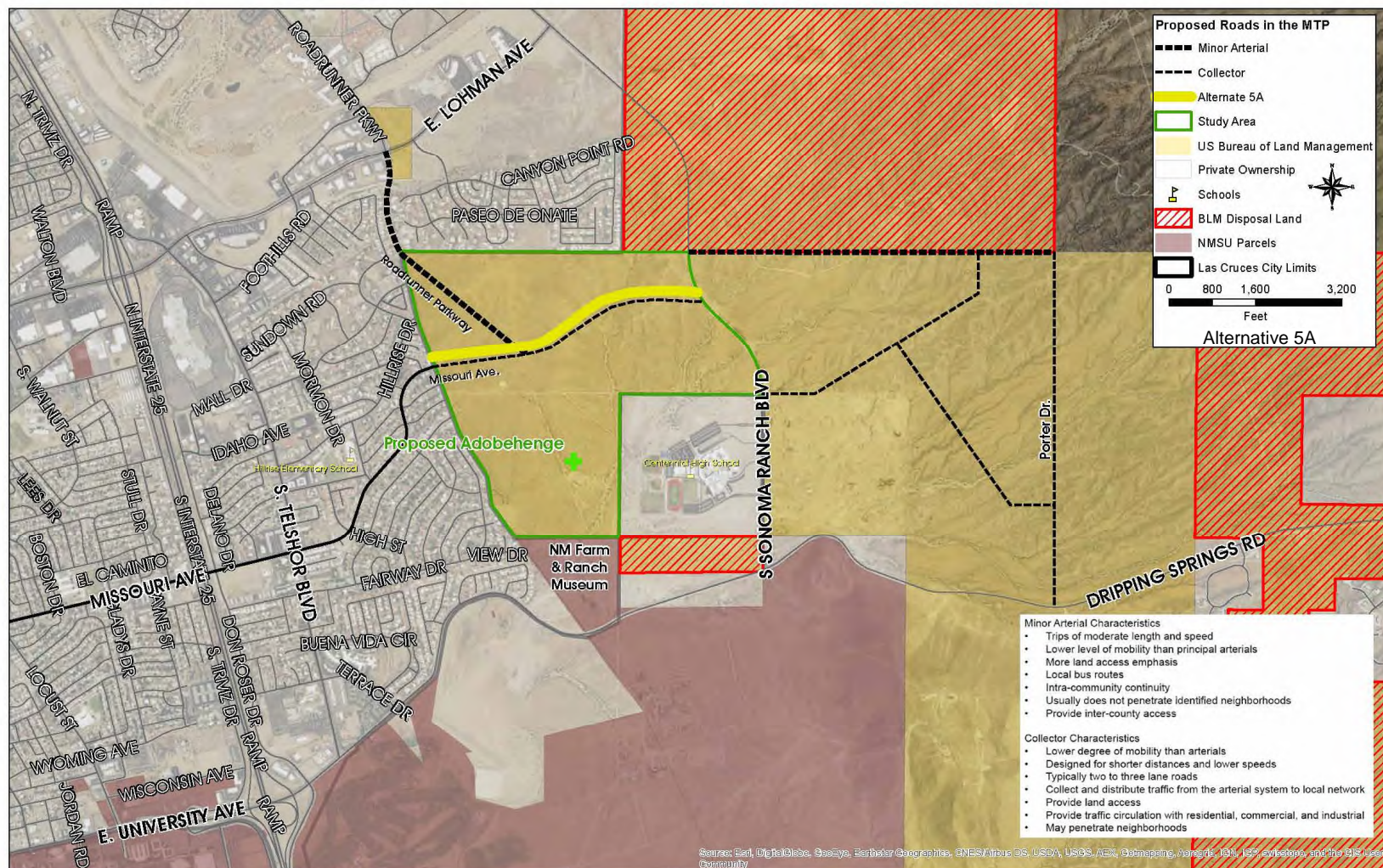
Alternative 3: Roadrunner Extension



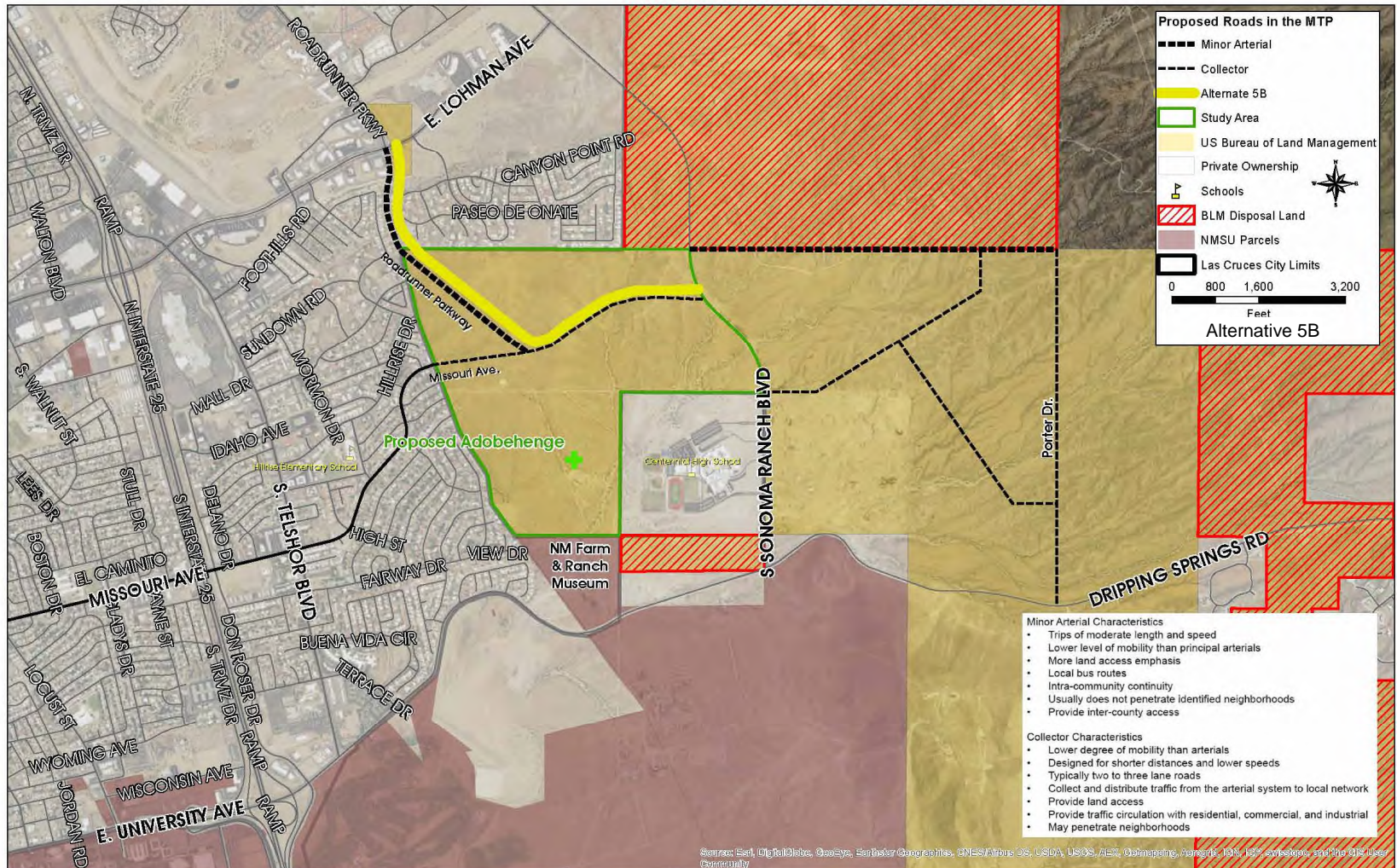
Alternative 4: MTP Build Scenario

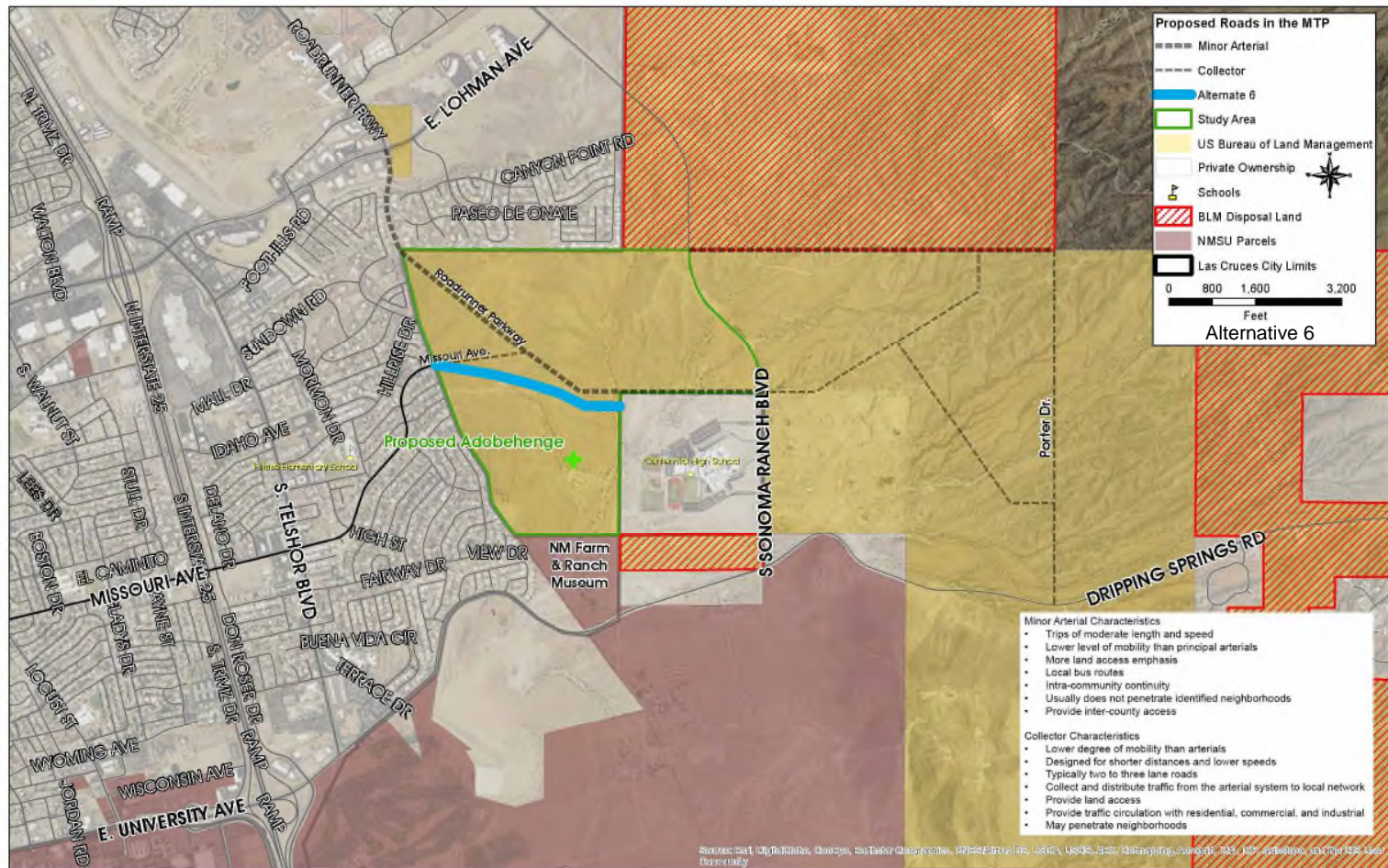


Alternative 5A: Missouri Northern



Alternative 5B: Roadrunner Northern





Alternatives Matrix

Criteria	Definition	Alternative							
		1. No Build	2. Missouri Extension	3. Roadrunner Extension	4. MTP Build Scenario	5A. Missouri Northern	5B. Roadrunner Northern	5C. MTP Scenario Northern Route	6. Bicycle/Pedestrian Connection
		No Build Scenario - Keep Missouri Ave and Roadrunner Parkway on the MTP project list	Build Missouri to Sonoma Ranch (2 Lane Collector) along MTP corridor; No-Build Roadrunner (project remains on MTP list)	Build Roadrunner (2 lane arterial) along the MTP corridor; No Build Missouri, project remains in the MTP	Build Missouri (2 lane collector) to tie in with Roadrunner (2-lane arterial) which connects with Sonoma Ranch along the MTP Corridor	Build Missouri Ave to Sonoma Ranch along northern route (No Build of Roadrunner Parkway)	Build Roadrunner Parkway to Sonoma Ranch along northern route (No Build of Missouri Ave)	Build Missouri (2-lane collector) to tie in with Roadrunner (2 lane arterial) which connects with Sonoma Ranch along a northern corridor	Build bike and pedestrian facilities independently – evaluating the best route to connect the Missouri Avenue neighborhood to Centennial High School as well as connect with Adobehenge.
Purpose and Need	Enhanced transportation network connectivity and improved options for non-motorized travel	Does not meet purpose and need.	Fully meets purpose and need.	Provides additional connection to Sonoma Ranch Blvd, but route is somewhat redundant to Lohman Ave. Does not meet need of improved pedestrian and bicycle connections from Missouri Ave.	Fully meets purpose and need.	All three northern routes provide east-west connectivity to Sonoma Ranch Rd. The route does NOT meet the need of providing direct pedestrian and bicycle connectivity to Centennial HS for residents along Missouri Ave.			East-west connectivity needs are met for non-auto modes only.
Access	Multi-modal access to Centennial HS, New Mexico Farm & Ranch Museum, Adobehenge, and to east Las Cruces	Does not provide improved access.	Provides direct access to major destinations within study area plus areas further east	Access to study area destinations is indirect through Sonoma Ranch Blvd from the east	Provides direct access to major destinations within study area plus areas further east	Access to key destinations in the study area is somewhat improved, but less direct due to the more northern alignment			Improved access for pedestrian and bicycle travel only
Network Connectivity	Link Missouri Ave neighborhood to destinations to the east and improve network connections	Does not provide improved connectivity.	Provides east-west connectivity and new multi-modal links	Limited connectivity benefits for neighborhoods west of Centennial HS	Provides east-west connectivity and new multi-modal links	Provides east-west connectivity and new multi-modal links from neighborhood	Limited connectivity benefits for neighborhoods west of Centennial HS	Provides east-west connectivity and new multi-modal links from neighborhood	Creates new bicycle and pedestrian network connectivity. Does not improve roadway network.
Environment	Presence of arroyos, natural land uses, or other topography that create engineering challenges	No impacts	Must cross a total of 4 arroyos. A complicated set of culverts may be required for the arroyo system on the north side of the Centennial HS campus.	Must cross 6-9 arroyos, including 2 arroyos near Centennial HS. In addition to 1 arroyo south of Lohman Ave, there are 3-6 arroyos that must be crossed between the edge of the study area and the point where the route crosses the Missouri Ave extension, depending on the alignment.	Must cross a total of 8-11 arroyos. 4-7 arroyos must be crossed along Roadrunner Pkwy, depending on the alignment.	The northern route from Missouri Ave must cross 6 arroyos before intersecting with Sonoma Ranch Rd.	Must cross a total of 8-11 arroyos (3-6 between the edge of the study area and the point where the route meets the proposed Missouri Ave extension.	Must cross 10-13 arroyos, depending on the alignment of Roadrunner Parkway.	Must cross a total of 4 arroyos, including 2 north-south running arroyos near Centennial HS. A complicated set of culverts may be required for the arroyo system on the north side of the Centennial HS campus.
Community	Project does not create adverse impacts to residential neighborhoods	No additional impacts or benefits.	Potential to generate additional through traffic in existing Missouri Ave neighborhoods. There are no impacts to residences near Roadrunner Pkwy.	Some impacts to residents along proposed Roadrunner Parkway. No impacts to Missouri Ave neighborhoods.	Reduced impacts to Missouri Ave neighborhoods since route is designed as a collector that discourages through traffic. As an arterial, Roadrunner Pkwy is expected to draw higher number of trips.	Potential to generate additional through traffic in existing Missouri Ave neighborhoods	Some impacts to residents along proposed Roadrunner Parkway. No impacts to Missouri Ave neighborhoods.	Reduced impacts to Missouri Ave neighborhoods since route is designed as a collector that discourages through traffic	There is a positive impact to the community through increased pedestrian and bicycle access without additional vehicle travel.
Consistency with Existing Planning Documents	Alternative is identified in the Mesilla Valley MPO's Transport 2040 Plan. The project is consistent with the goals and objectives of the MTP or is named in the Transportation, Bicycle System, or Trail System Priorities Plans.	Project remains on MTP, but implementation is postponed	Missouri Ave extension is identified in the 2021-2030 years of the MTP.	Roadrunner Parkway is a proposed Minor Arterial in the MV/MPO Future Thoroughfare Map	Both projects are identified in the MTP as part of the long-term roadway network.	The northern route is not an alignment identified in the 2040 MTP or the Mesilla Valley MPO Future Thoroughfare Map			Missouri Ave and Roadrunner Parkway are identified as bicycle system priorities by the Mesilla Valley MPO
Right-of-Way	Length of roadway to be constructed. All routes are along land currently owned by BLM and would require leases. The City of Las Cruces owns the northernmost portion of the proposed Roadrunner Pkwy.	None required at this time.	1.2 miles	1.87 miles	2.2 miles (Missouri Ave collector extension is 0.33 miles)	≈1.01 miles	≈1.56 miles	≈1.95 miles	1.2 miles
Magnitude of Costs	Magnitude of cost based on length and type of roadway plus the presence of topographic features such as arroyos.	No costs at this time.	Moderate	Moderate-High	Highest among MTP scenario alternatives, though Missouri Ave collector segment is not overly costly	Moderate	Moderate-High	Highest among northern route alternatives	Low-Moderate

Next Steps

- ▲ TAC / BPAC / Policy Committee input
- ▲ Continue Coordination with Stakeholders
- ▲ Refine Alternatives for Consideration
- ▲ Second Public Meeting in Spring
- ▲ Consider Funding Options
- ▲ Finalize Study by mid-late 2016

Questions?



METROPOLITAN PLANNING ORGANIZATION

SERVING LAS CRUCES, DOÑA ANA COUNTY, AND MESILLA

P.O. BOX 20000 | LAS CRUCES NM | 88004

PHONE (575) 528-3222 | FAX (575) 528-3155

<http://mvmmpo.las-cruces.org>

MESILLA VALLEY METROPOLITAN PLANNING ORGANIZATION TECHNICAL ADVISORY COMMITTEE DISCUSSION FORM FOR THE MEETING OF March 3, 2016

AGENDA ITEM:

5.2 Presentation on the Multi-Use Trail Loop

DISCUSSION:

MPO Staff will give a presentation on the ongoing work planning for the southern leg of the Multi-Use Trail Loop.



METROPOLITAN PLANNING ORGANIZATION

SERVING LAS CRUCES, DOÑA ANA, AND MESILLA

P.O. BOX 20000 | LAS CRUCES NM | 88004
PHONE (575) 528-3222 | FAX (575) 528-3155
<http://mvmpo.las-cruces.org>

LAS CRUCES METROPOLITAN PLANNING ORGANIZATION TECHNICAL ADVISORY COMMITTEE DISCUSSION FORM DISCUSSION FORM FOR THE MEETING OF MARCH 3, 2016

AGENDA ITEM:

6.1 City of Las Cruces, Doña Ana County, Town of Mesilla, Las Cruces Public Schools, RoadRUNNER Transit, and South Central Regional Transit District (SCRTD) Project Updates. Updates have been requested from the entities. The responses from the entities are included below.

ACTION REQUESTED:

Updates from the Jurisdictions regarding current projects

DISCUSSION:

City of Las Cruces Current Projects:

City of Las Cruces Staff did not provide a written update.

Doña Ana County Current Projects:

DAC Staff does not see any funding obligation or issues with agreements.

G100030: Reconstruction of Dripping Springs – construction continues and is on schedule

LC00110: Design and Construction for Intersection Realignment: El Camino Real at Doña Ana School Road – project engineers are revising ROW mapping based on NMDOT commentary

Town of Mesilla

No current projects

Las Cruces Public Schools

Las Cruces Public Schools Staff did not provide a written update.

RoadRUNNER Transit

In February 2016, the Policy Committee approved an amendment to TL00013 to adjust this project to add the unobligated portion on the FY2015 apportionment that had to be rolled over to FY2016. The City's Transit Section will be requesting amendments to both TL00010 and TL00013. This is necessary because more of the FY2016 appropriation will need to be programmed for Transit operations and less for Transit Capital projects. On February 16, 2016, the FY 2016 full FTA apportionments were

published in the Federal Register. The Transit Section will be applying to FTA for projects using the FY 2016 funds once the amendment noted above has been approved into the STIP.



METROPOLITAN PLANNING ORGANIZATION

SERVING LAS CRUCES, DOÑA ANA, AND MESILLA

P.O. BOX 20000 | LAS CRUCES NM | 88004
PHONE (575) 528-3222 | FAX (575) 528-3155
<http://mvmpo.las-cruces.org>

LAS CRUCES METROPOLITAN PLANNING ORGANIZATION TECHNICAL ADVISORY COMMITTEE DISCUSSION FORM DISCUSSION FORM FOR THE MEETING OF MARCH 3, 2016

AGENDA ITEM:

6.2 NMDOT Projects Update. Updates were requested from NMDOT Staff. The responses from NMDOT have been included below.

ACTION REQUESTED:

Update from NMDOT regarding current projects

DISCUSSION:

1100820: Waiting on Notice to Proceed for Phase B with Molzen

LC00120: Looking at project to let in October 2016

LC00240: Kickoff meeting with Smith Engineering should be scheduled for next month

LC00250: Contract negotiations are ongoing with Molzen

LC00270: Kickoff meeting with Smith Engineering should be scheduled for next month