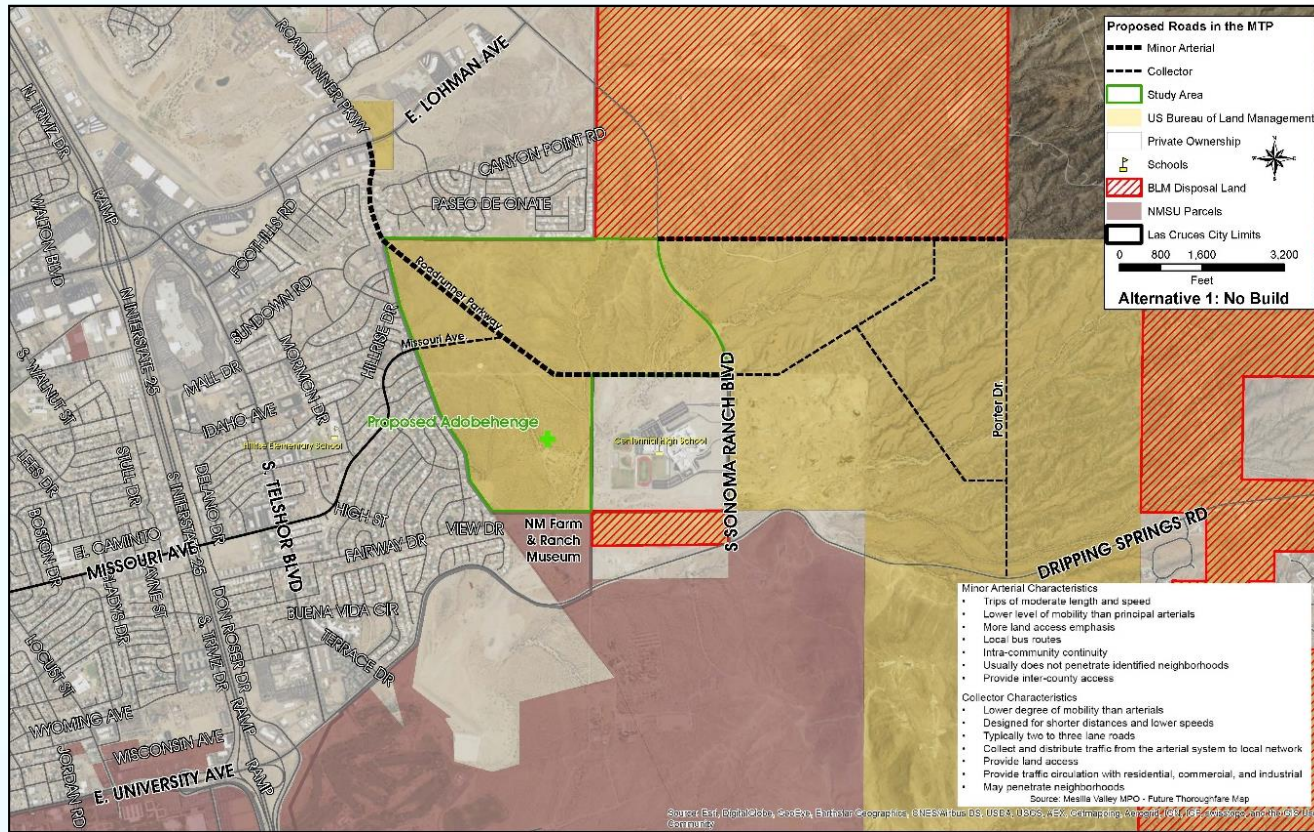


Missouri Avenue Corridor Study



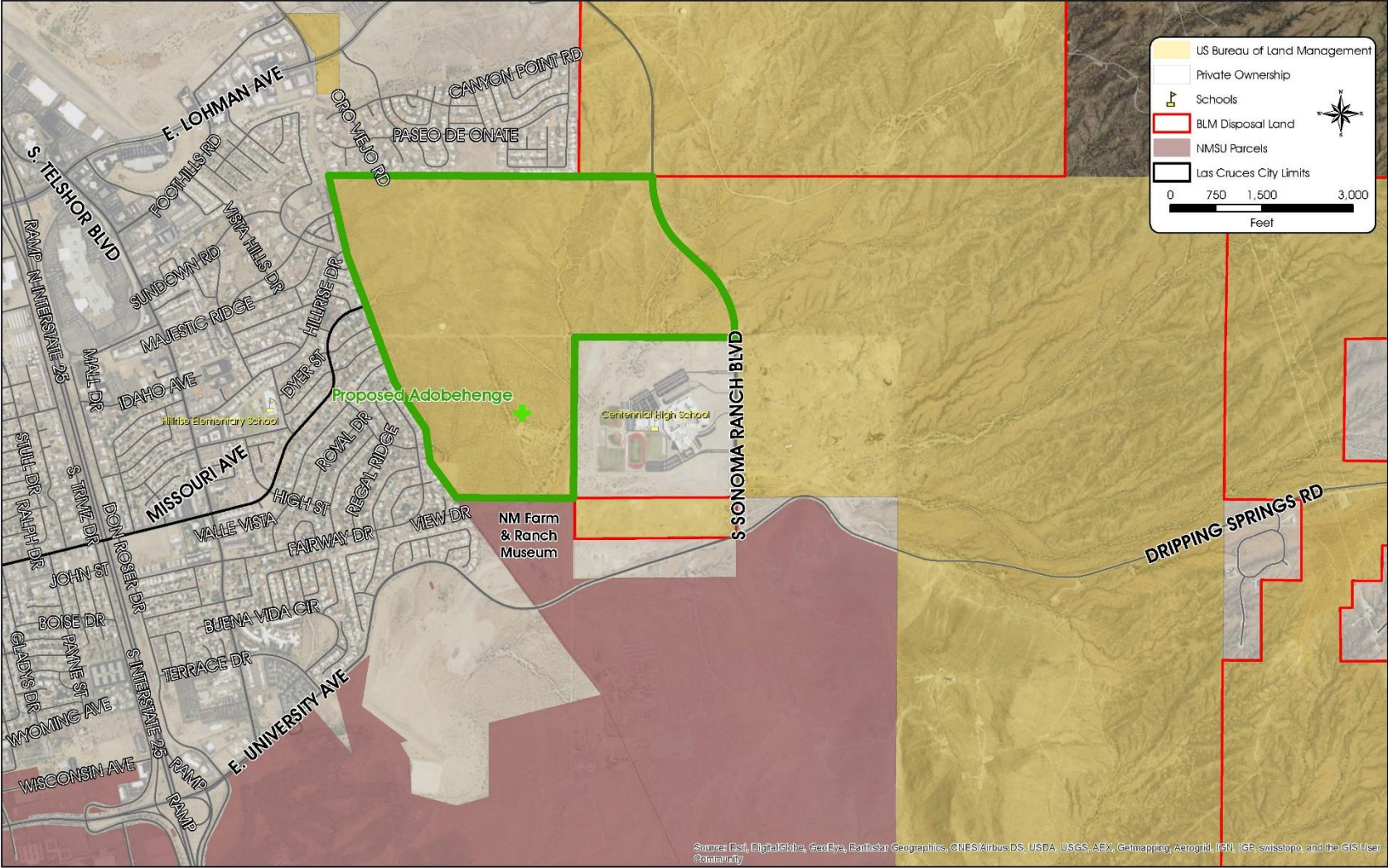
Public Meeting
March 30, 2016



Missouri Avenue Corridor Study

- ▲ Study Area
- ▲ Planning Process
- ▲ Purpose and Need
- ▲ Input and Feedback to Date
- ▲ Potential Alternatives
- ▲ Next Steps

Study Area Map

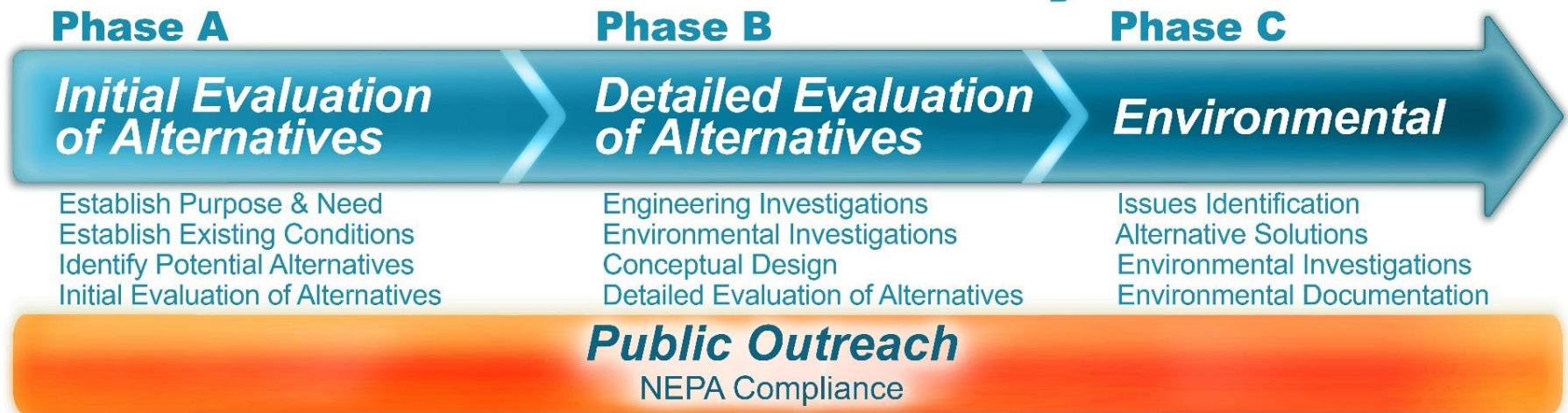


Sources: Esri, DigitalGlobe, GeoEye, Earthstar Geographics, CNES/Airbus DS, USDA, USGS, AeroX, Getmapping, Aerogrid, IGN, IGP, swisstopo, and the GIS User Community

Planning Process

- ▲ Study utilizes Federal Highway Administration (FHWA) Planning funds
- ▲ NMDOT Location Study Procedures Phase A
- ▲ Public input is critical
- ▲ Plan and recommendations will be used to request funding
- ▲ Environmental analysis, design, and construction to be undertaken in later phases

NMDOT Location Study Process



▲ Phase A includes:

- Initial alternatives, screening for fatal flaws, limited engineering
- Recommendations on 1-3 alternatives (including No-Build)

▲ Phase A does not include:

- Exact costs (will consider magnitude of costs)
- Preliminary engineering analysis (i.e. project design)

Purpose and Need

The **purpose** of the **Missouri Avenue Corridor Study** is to provide additional multi-modal connectivity from Missouri Avenue or Roadrunner Parkway across vacant land to Sonoma Ranch Boulevard.

The **NEED** is based on the following:

- ▲ Lack of **network connectivity** in the area
- ▲ Lack of **pedestrian and bicycle facilities** in the area

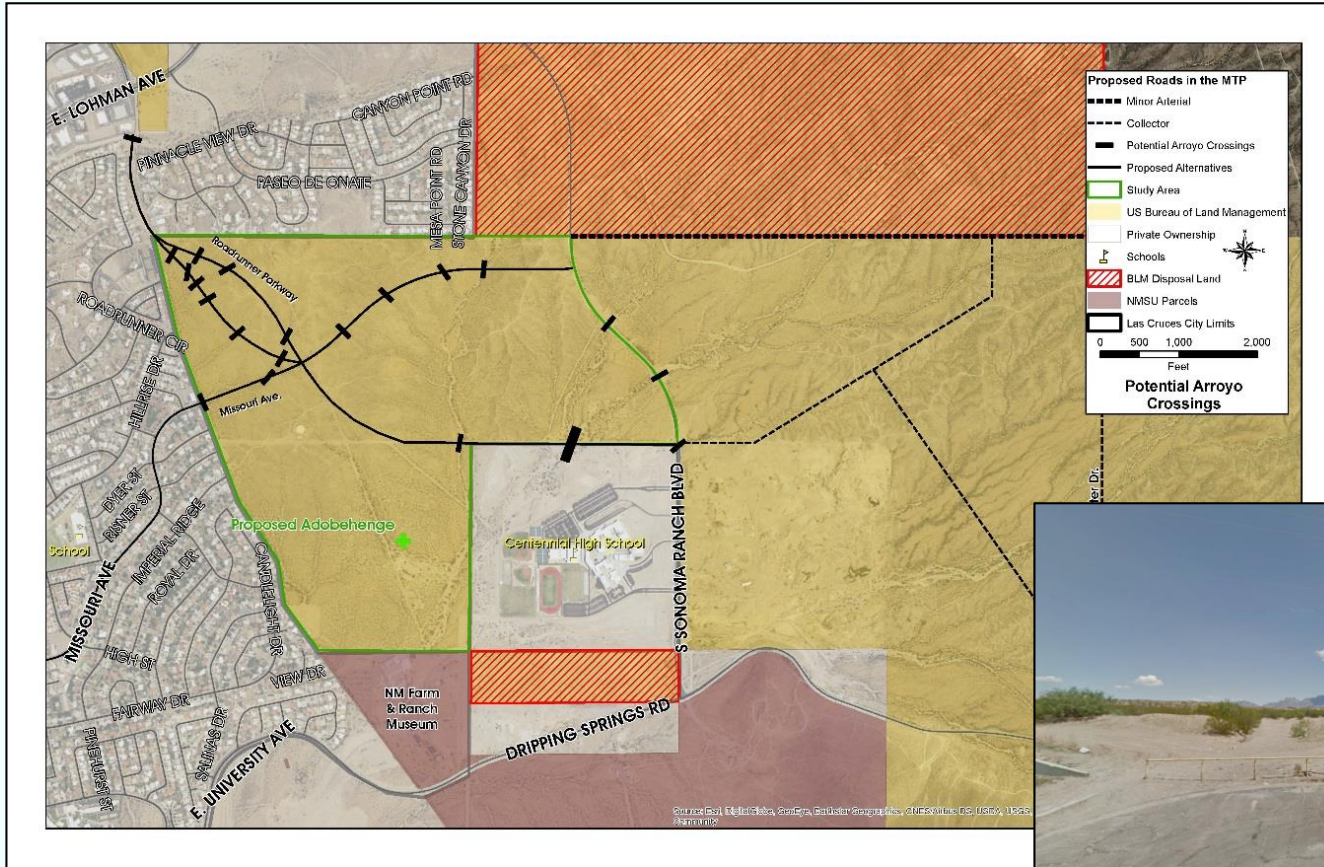
Opportunities

- ▲ Enhance multi-modal facilities
- ▲ Create additional network connectivity
- ▲ Active participation of BLM and NM Farm and Ranch Museum
- ▲ Potential trail connection with Adobehenge

Challenges

- ▲ Land is owned and maintained by BLM
- ▲ Potential conflicts with ATVs on vacant land
- ▲ Project implementation funding has not yet been identified
- ▲ Topography / drainage

Topographical Issues



▲ Study area is generally rugged and marked by a number of arroyos

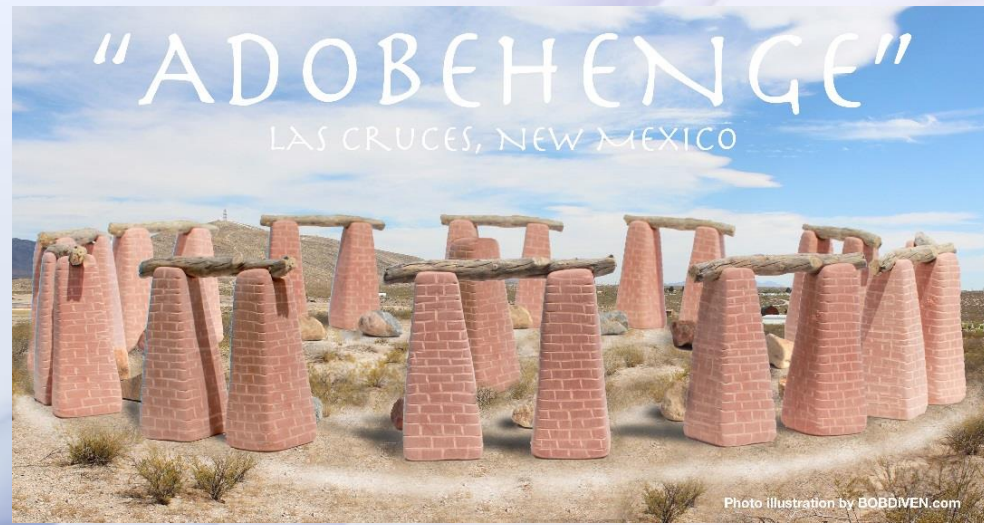
Project Team

- ▲ Mesilla Valley MPO
- ▲ NMDOT
- ▲ City of Las Cruces
- ▲ Doña Ana County
- ▲ Bureau of Land Management
- ▲ Las Cruces Public Schools
- ▲ NM Farm and Ranch Museum

Meetings in August 2015 / September 2015 / January 2016

Input & Feedback

- ▲ New Mexico Farm and Ranch Heritage Museum
 - Supports access to Museum
 - Appreciate bicycle/pedestrian facilities
 - Supports least intensive development near museum
- ▲ Adobehenge
 - To be built in conjunction with Farm and Ranch Museum
 - Could be accessed via bicycle / pedestrian facilities



Input & Feedback

▲ Las Cruces Public Schools

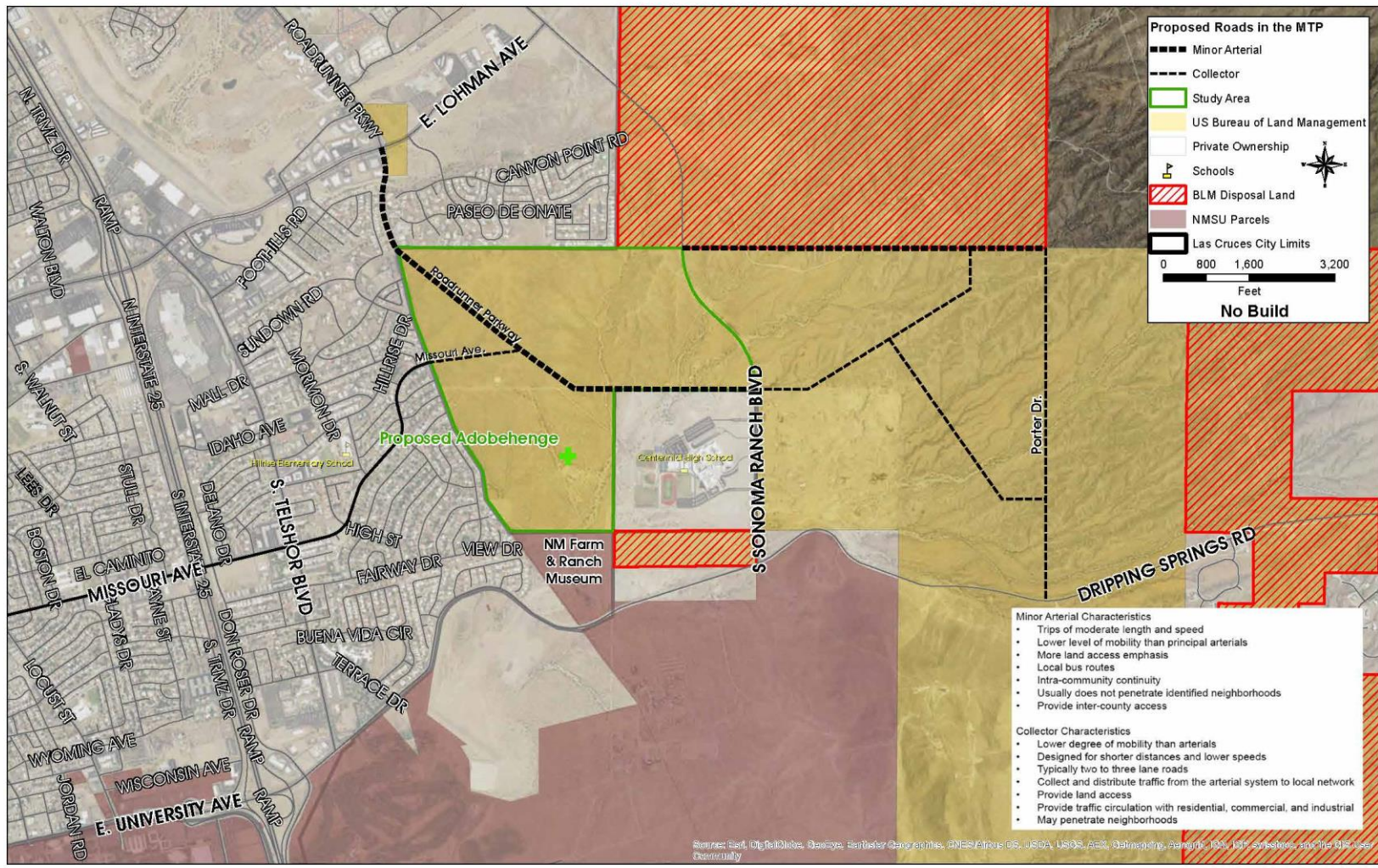
- No immediate need for additional roadway access
- Roadway to north would require additional access point and traffic management
- Appreciate the bicycle/pedestrian access for students



Input & Feedback

- ▲ Public meeting on December 2, 2015
 - Concerns about additional through traffic on Missouri Ave and impacts to property values
 - General support for pedestrian/bicycle facilities
- ▲ Additional meeting later in 2016

Transport 2040 MTP Network



Potential Alternatives to be Considered

▲ Roadway Typical

- Travel lanes / bicycle lanes / multi-use trail

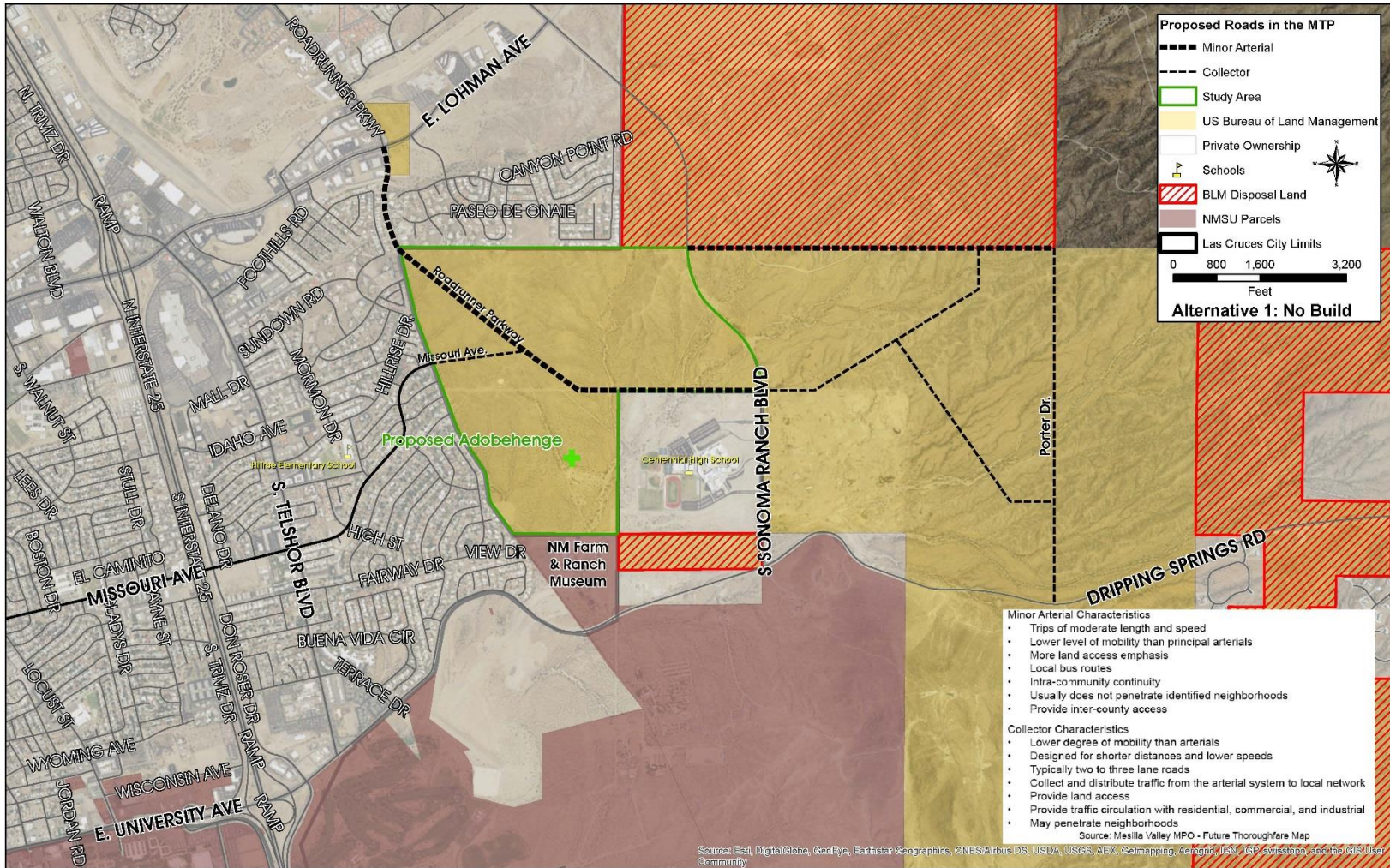
▲ Non-Motorized Trail

- Trail to accommodate bicycles and pedestrians

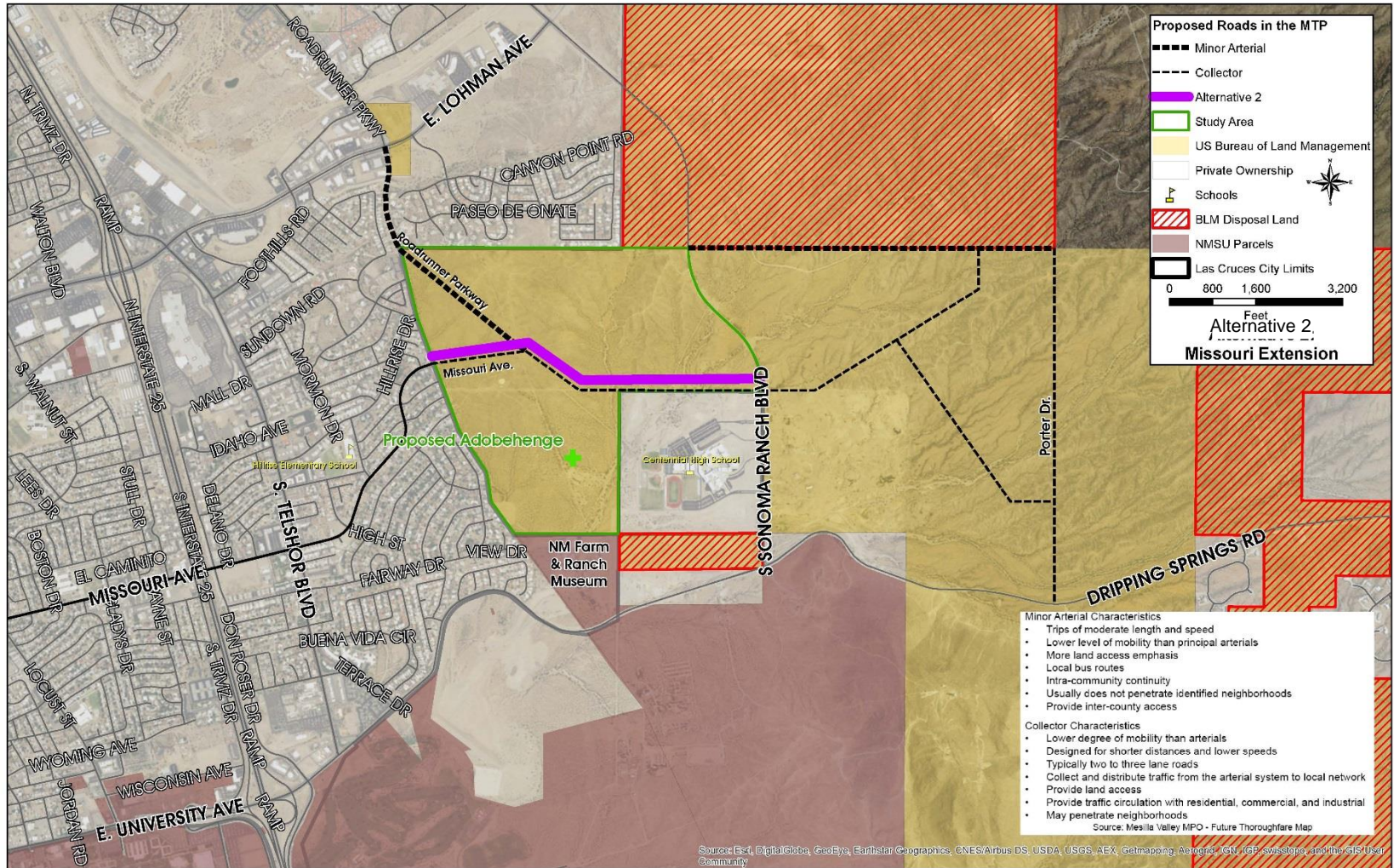
▲ No Build

- Do nothing at this time

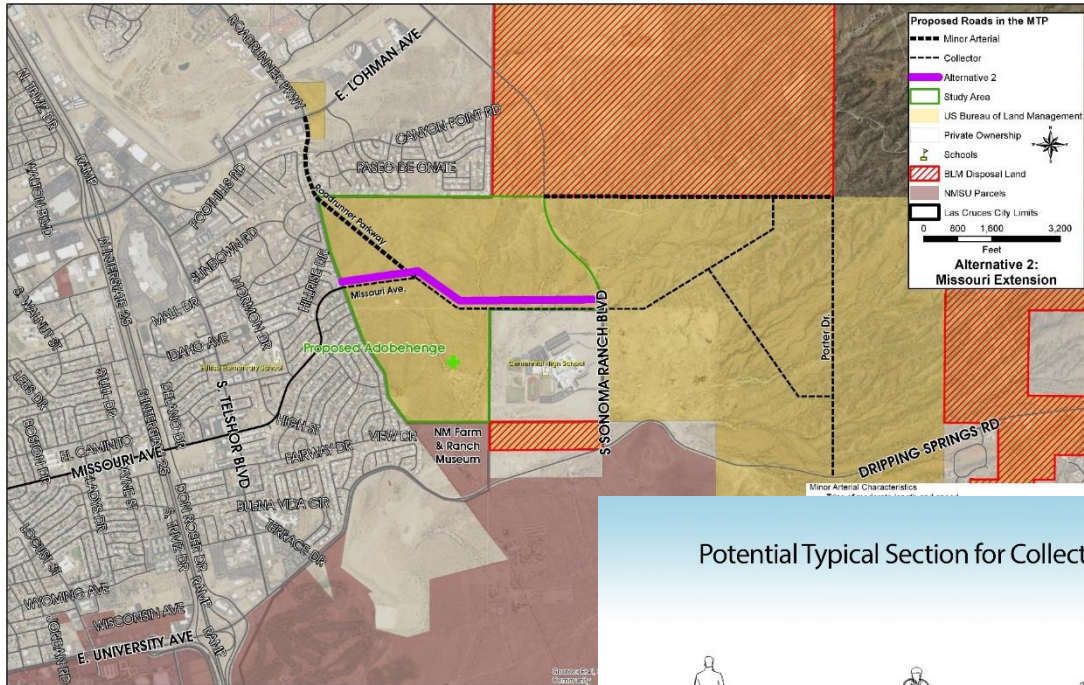
Alternative 1: No Build



Alternative 2: Missouri Extension

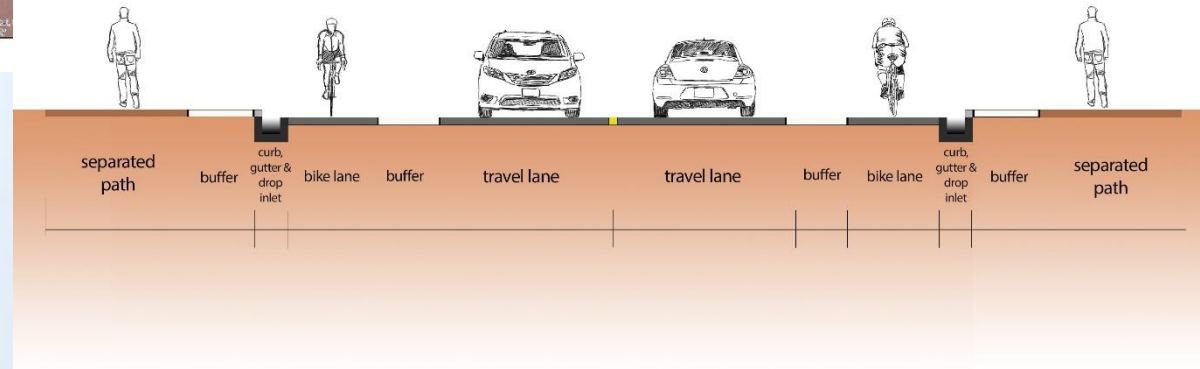


Alternative 2: Missouri Extension

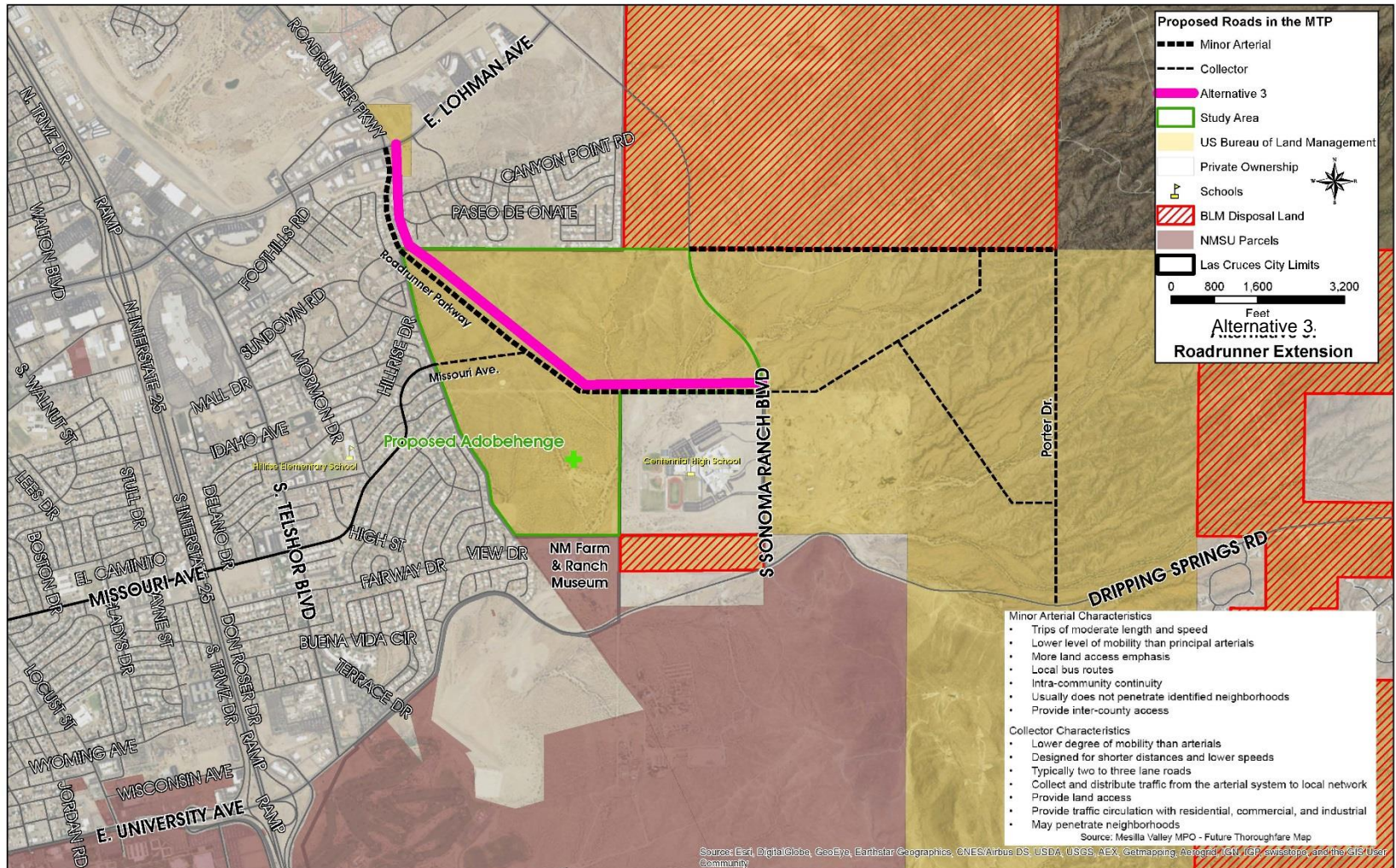


Potential Typical Section for Collector

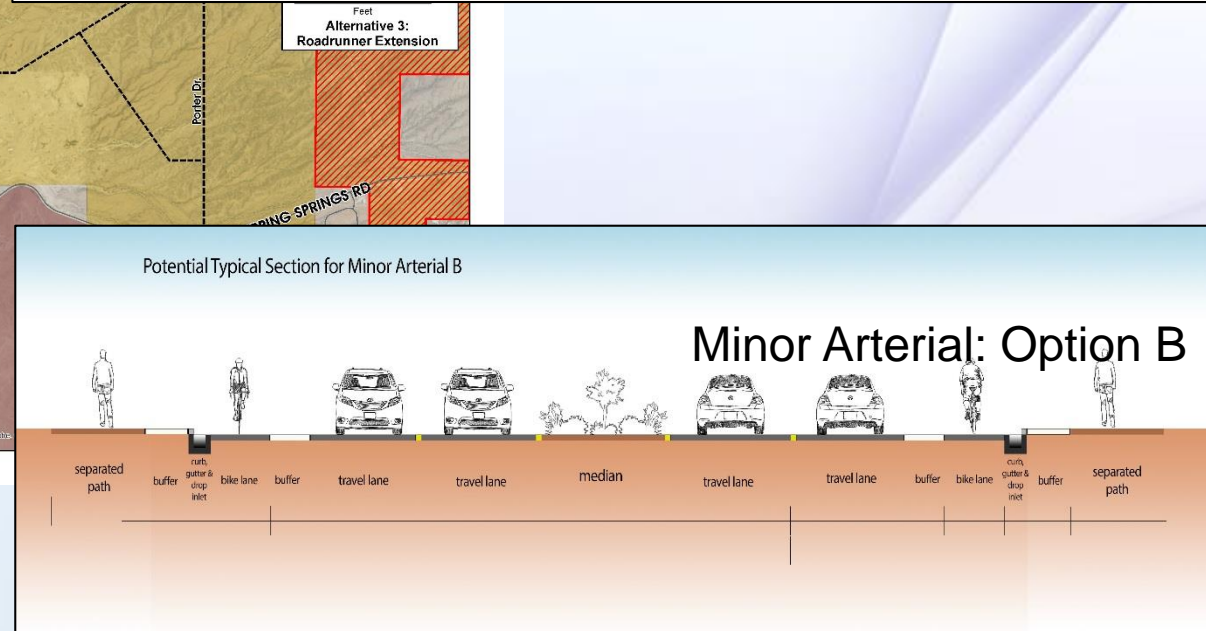
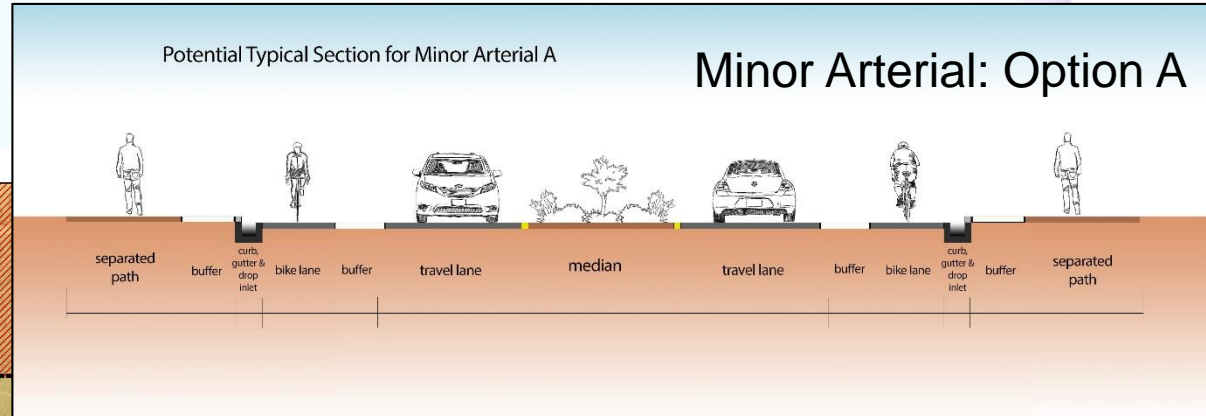
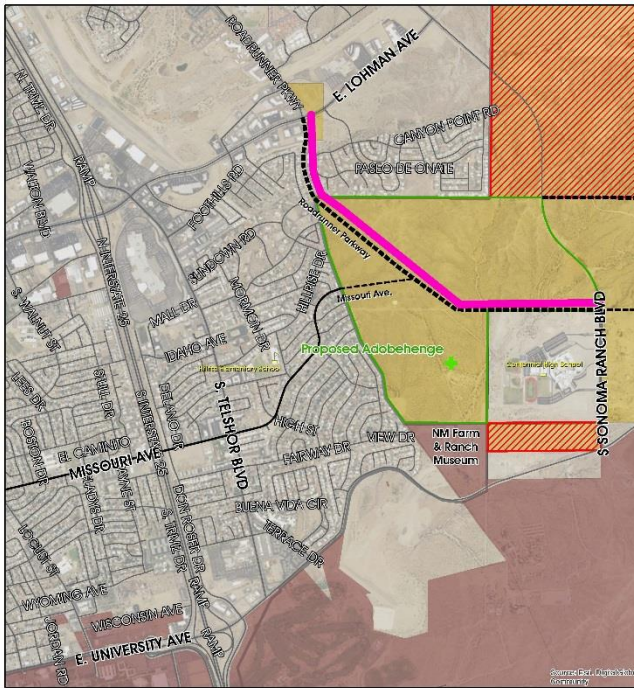
Minor Collector



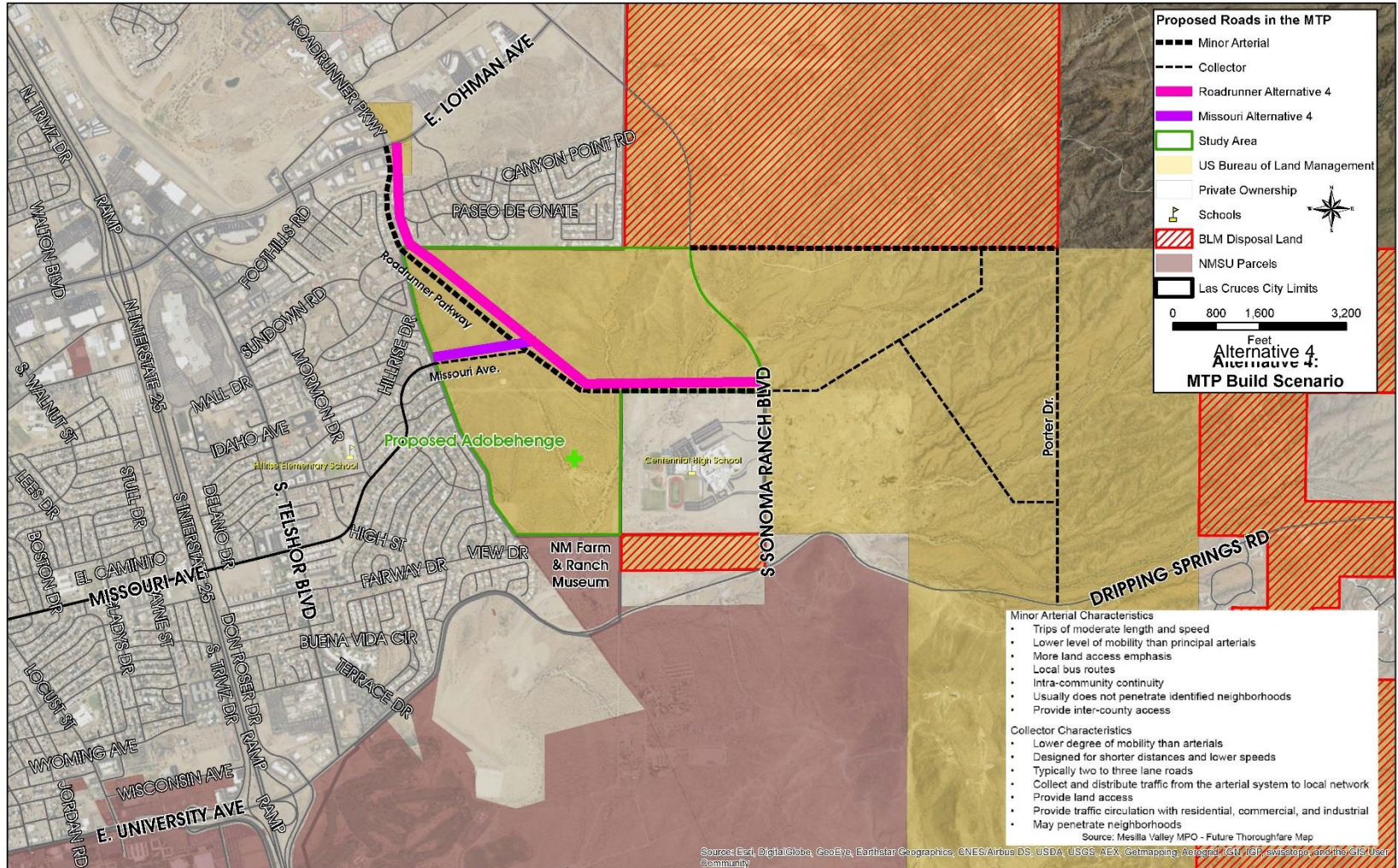
Alternative 3: Roadrunner Extension



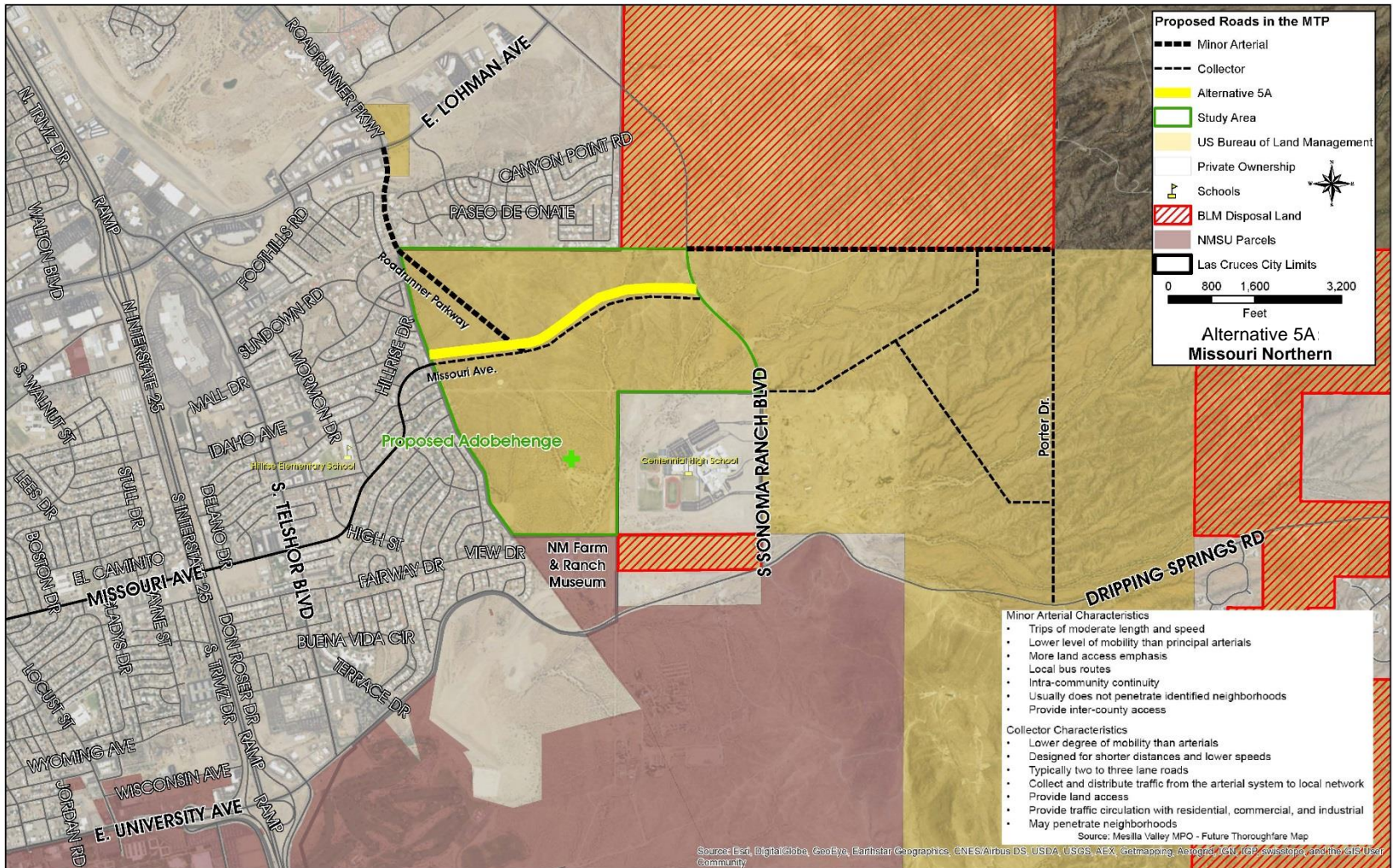
Alternative 3: Roadrunner Extension



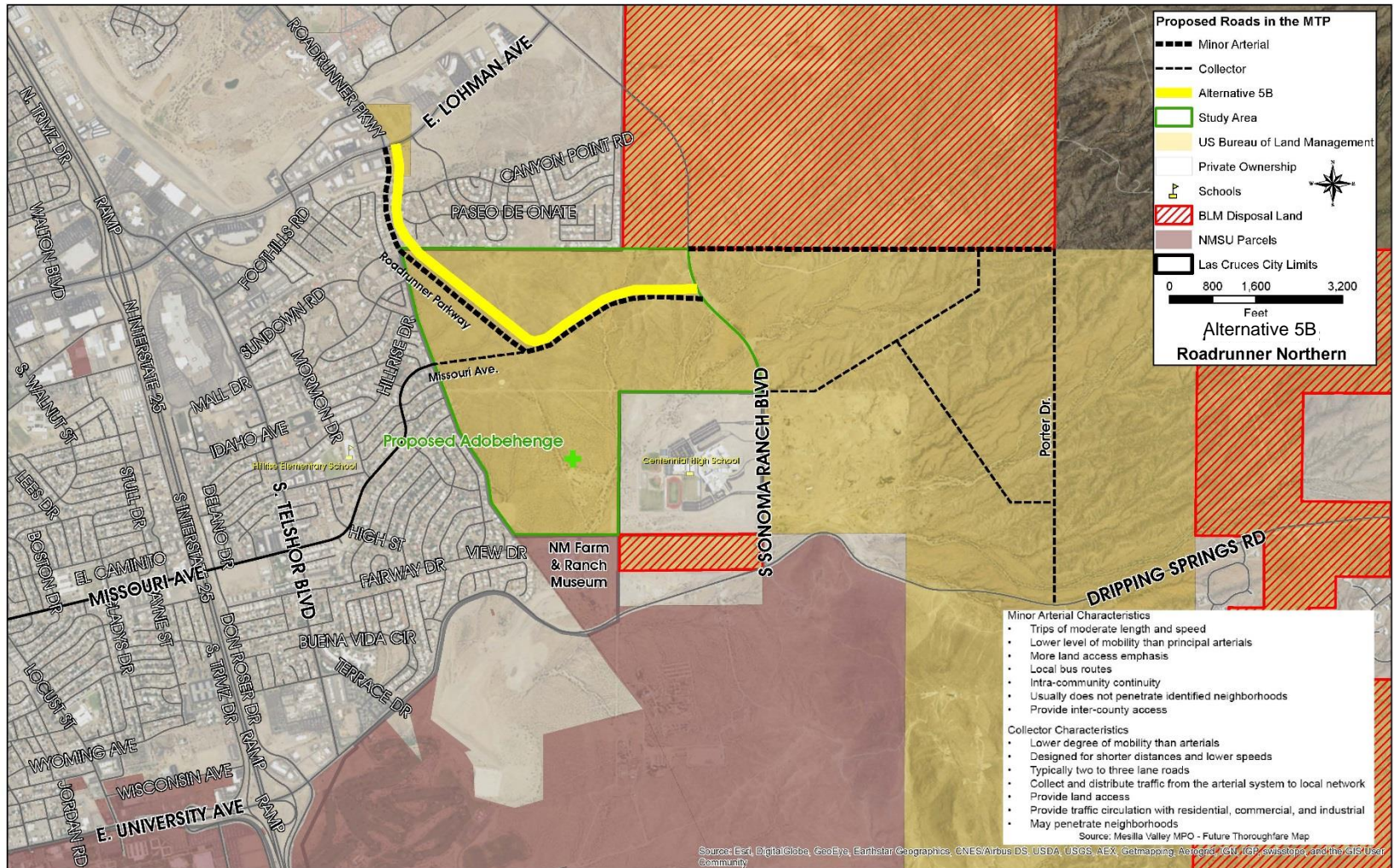
Alternative 4: MTP Build Scenario



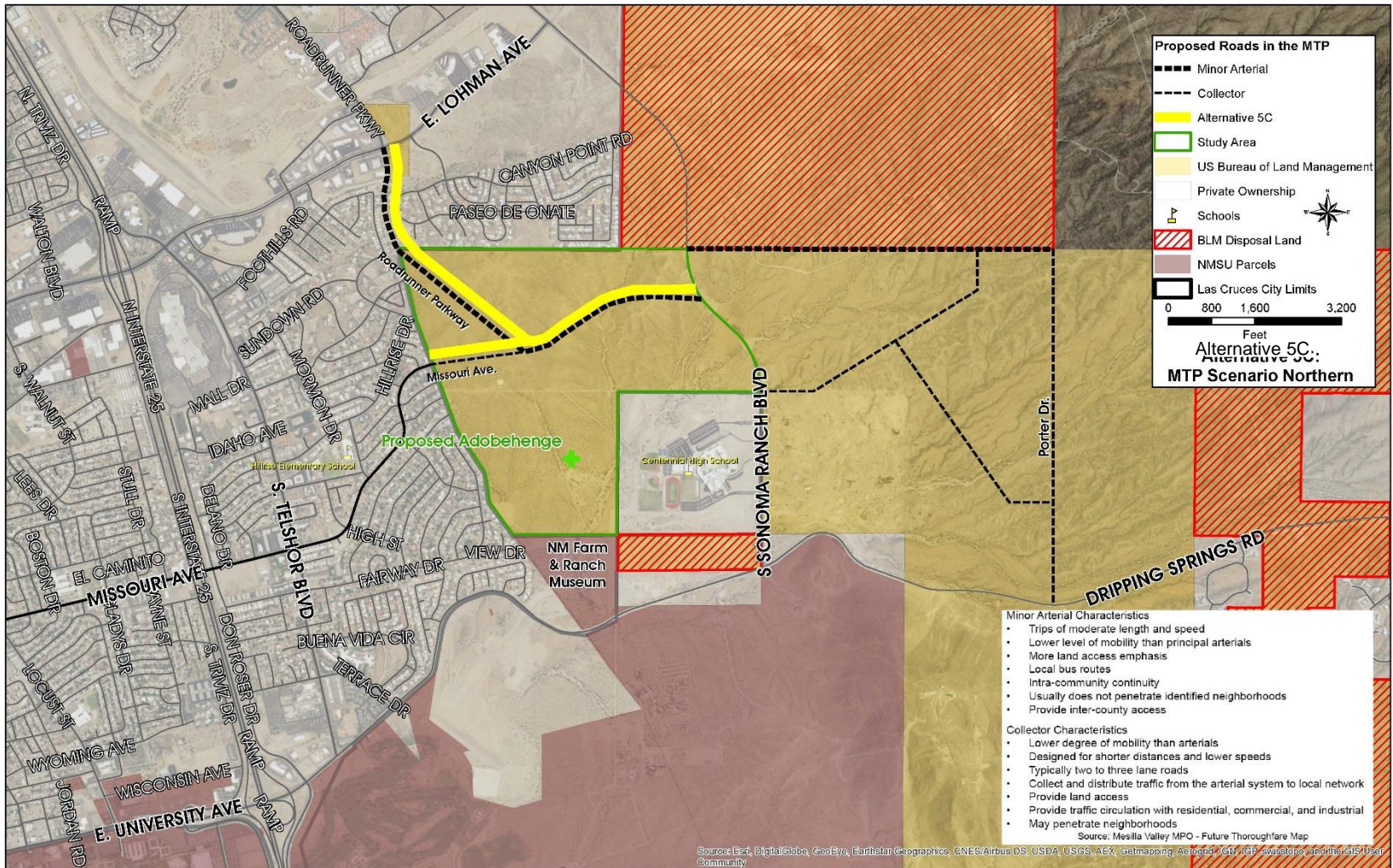
Alternative 5A: Missouri Northern



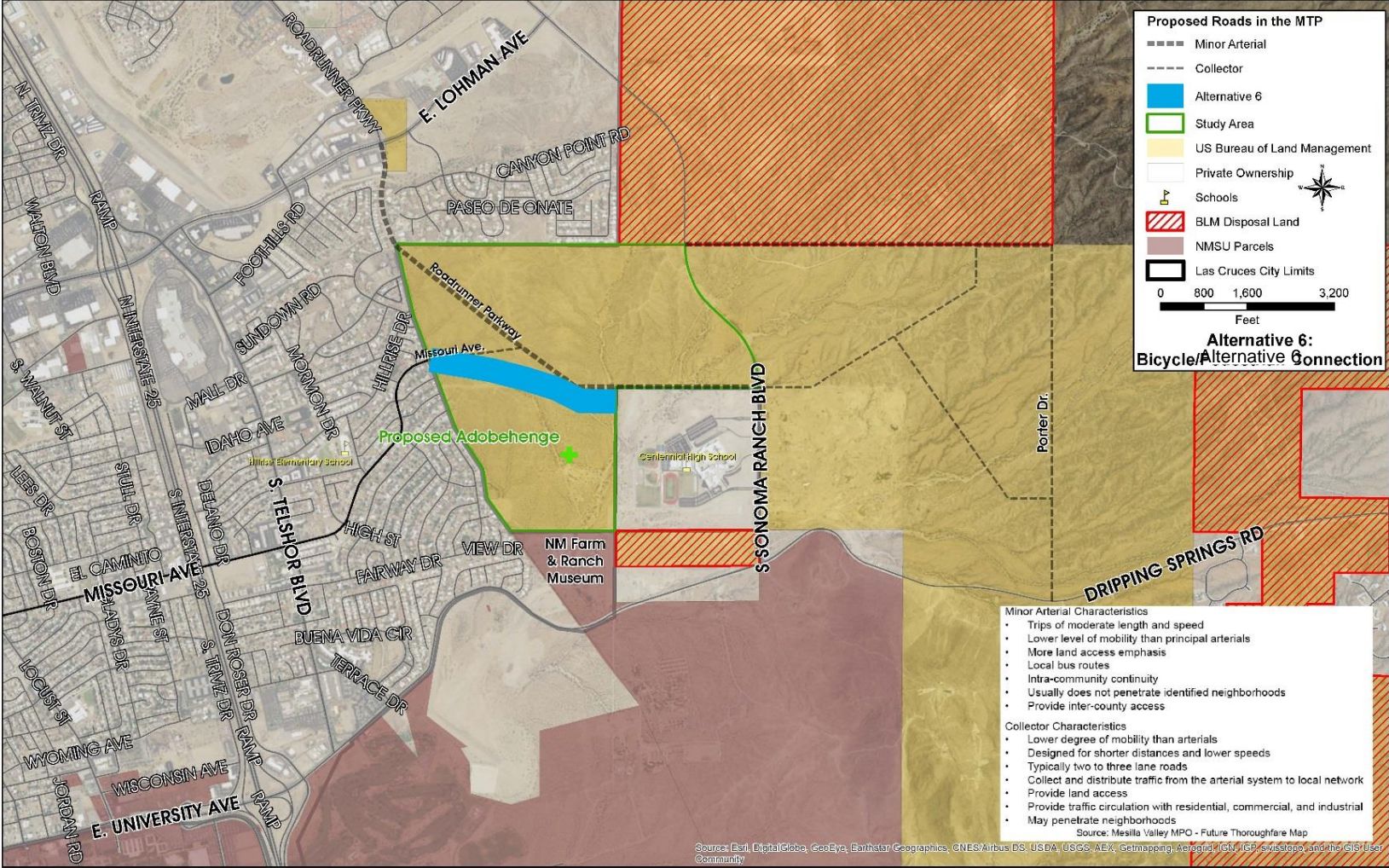
Alternative 5B: Roadrunner Northern



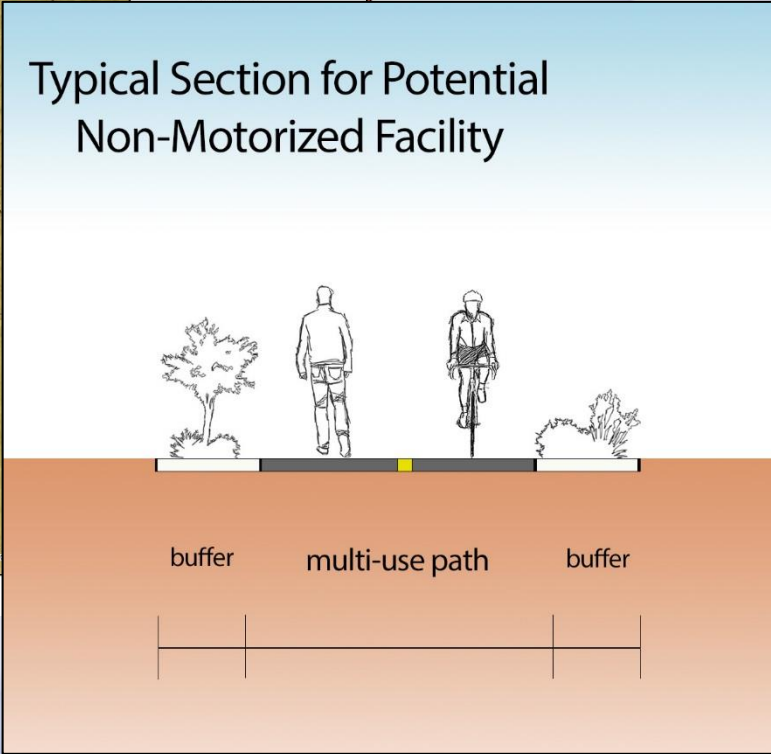
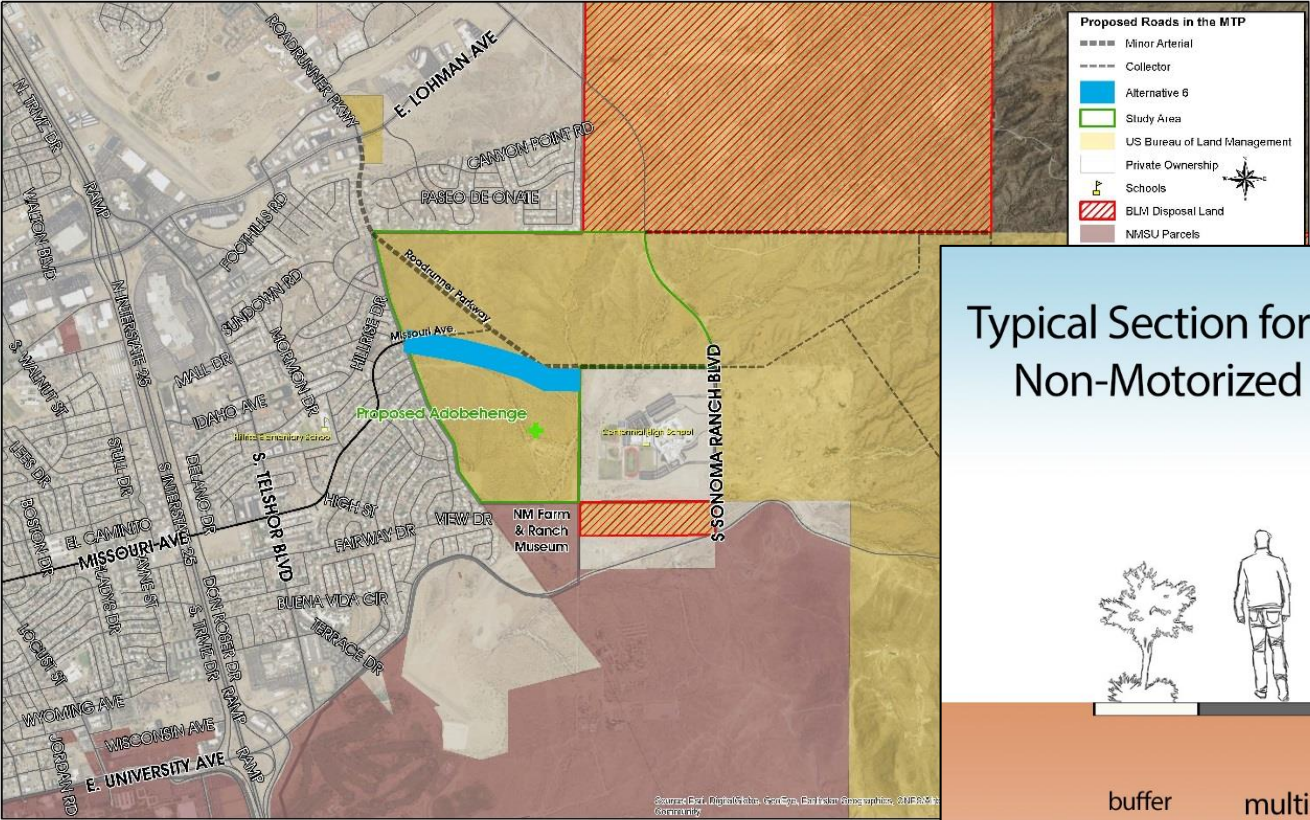
Alternative 5C: MTP Scenario Northern



Alternative 6: Bicycle/Pedestrian Connection



Alternative 6: Bicycle/Pedestrian Connection



Alternatives Evaluation Criteria

- ▲ Purpose and Need
- ▲ Access Across Study Area
- ▲ Network Connectivity
- ▲ Environmental Impacts
- ▲ Community Impacts
- ▲ Consistency with Existing Plans
- ▲ Right of Way Needs
- ▲ Magnitude of Costs

Next Steps

- ▲ Generate feedback on alternatives
- ▲ Further analysis (e.g. bicycle and pedestrian infrastructure, drainage concerns)
- ▲ Refine alternatives with project team
- ▲ Public meetings in fall 2016
- ▲ Identify potential funding opportunities
- ▲ Finalize study by mid-late 2016

Questions?

▲ Denise Weston, AICP
dweston@bhinc.com

▲ Kristen Woods
kwoods@bhinc.com

▲ Aaron Sussman, AICP
asussman@bhinc.com

▲ Andrew Guerra, PE
aguerra@bhinc.com