



Pedestrian System Priorities Plan

MESILLA VALLEY METROPOLITAN PLANNING ORGANIZATION
ORGANIZACIÓN DE PLANIFICACIÓN METROPOLITANA DEL VALLE DE MESILLA



PEDESTRIAN CATCHMENTS

Catchments show the distance along the street network from a specific location. Generally, a person will walk 1/4 mile to a bus stop or 1/2 mile to school. The catchments shown in this map allow us to see how well connected the streets are to school locations. A catchment can also help determine where to focus pedestrian infrastructure improvements. Ranking of pedestrian projects should be based on public input, crash data, and proximity to parks, schools, and transit. This map shows specific corridors, intersections, and areas that the public had concerns about improving facilities for pedestrians.

Current Corridor Priorities:

- 1 El Paseo - University to Downtown
- 2 Locust - Missouri to University
- 3 Alameda - Main to Picacho
- 4 Telshor - Lohman to US70
- 5 University - NM28 to Telshor
- 6 Valley - Amador to Hoagland
- 7 Alameda - Picacho to Hoagland
- 8 Solano - University to Main
- 9 Walnut - Idaho to Spruce
- 10 Idaho - Walnut to Triviz
- 11 Idaho - Main to Locust
- 12 Spruce - Telshor to Valley
- 13 Missouri - Don Roser to El Paseo
- 14 Berino Road - I-10 to NM 478
- 15 Vado Road - Vado Elementary to Highway 189
- 16 NM 28 - Through San Miguel

Current Intersection Priorities:

- 1 Walton and Lohman
- 2 Lohman and School Crossing
- 3 University and Jordan
- 4 Sonoma Ranch and Bataan Memorial E and W
- 5 Elks and Triviz
- 6 Walnut and Lohman
- 7 North Main and Spruce
- 8 Golf Club and Roadrunner
- 9 Union and Main
- 10 El Paseo and Idaho
- 11 Highway 228 and Railroad Crossing
- 12 Vado Road and Vado Elementary
- 13 Highway 192 and Highway 28
- 14 Madrid and Solano
- 15 Solano and Spruce
- 16 Spruce and Mesquite
- 17 Near Idaho and Solano
- 18 Missouri and Triviz
- 19 Boutz and El Paseo
- 20 Hadley and Valley
- 21 Locust and University
- 22 Amador and Main
- 23 Amador and Espina

Current Area Priorities:

- 1 Downtown and Historic Districts
- 2 University Area
- 3 Around Mesilla Valley Mall
- 4 North Main and Solano Area
- 5 Around Dona Ana County Building
- 6 Around Dona Ana Community College East Campus
- 7 Around New Elementary and Middle School
- 8 Around Onate and East Recreation Center
- 9 Around new High School and A Mountain
- 10 Around San Miguel
- 11 Around Mesquite near Railroad Crossing
- 12 Around La Mesa
- 13 Around Vado including river crossing

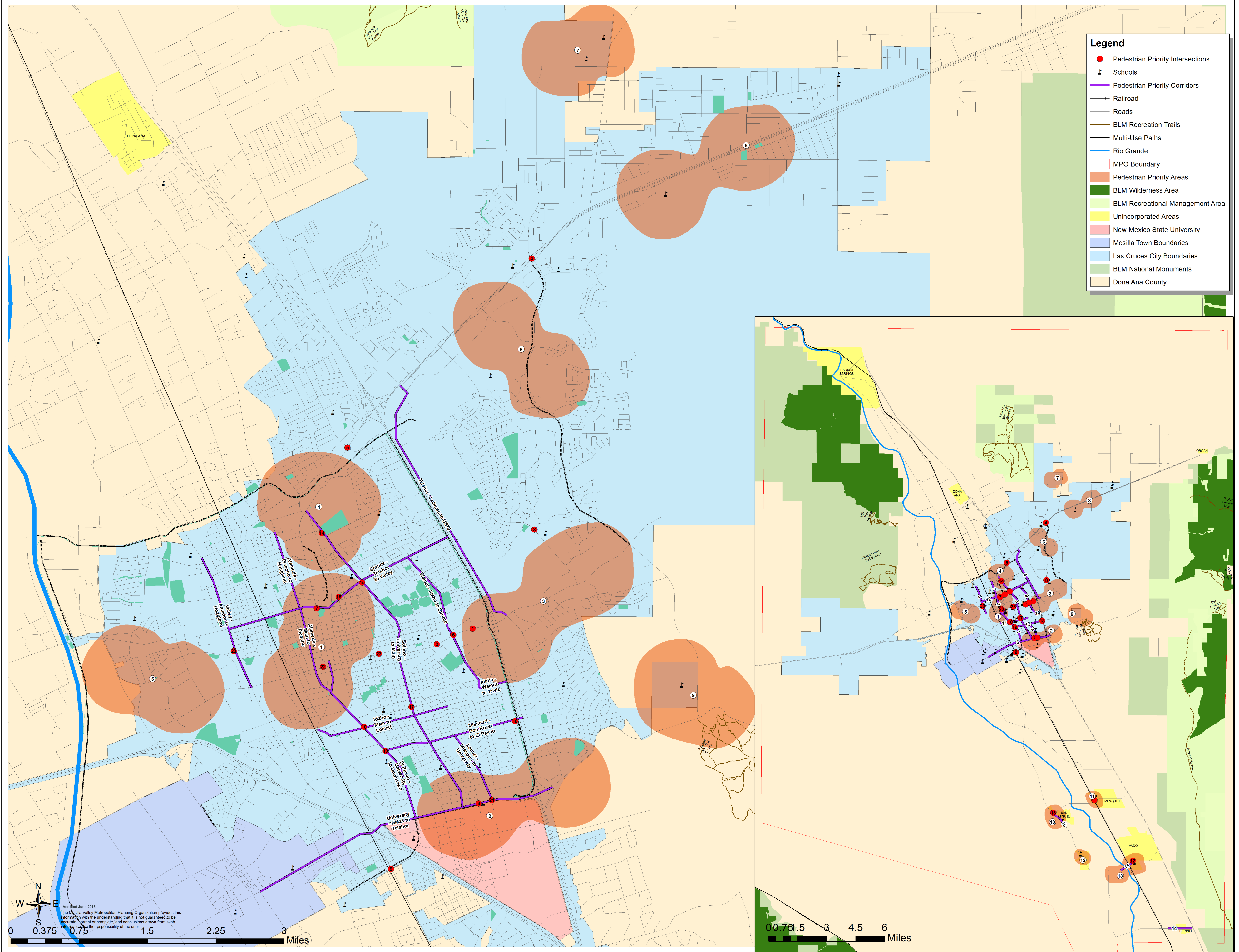
Associated Policies:

- Develop a pedestrian projects task force
- Continue to expand MPO Safe Routes to School program

SAFE ROUTES TO SCHOOL

Since 2005, the Las Cruces MPO has been building a Safe Routes to School (SRTS) program in partnership with many agencies, including Las Cruces Public Schools. The purpose of the program is to encourage children to walk and bike to school rather than be driven to school. Three schools, Hillrise, Mesilla, and Camino Real, have active programs. In 2009, the New Mexico DOT funded a full-time position to support our growing regional program. Proposed and ongoing projects include:

- District-wide school site assessments
- District-wide SRTS Action Plan
- Expand school-based programs
- Serve as a regional SRTS resource center



Transport 2040

Regional Transportation Planning for the Mesilla Valley
Planificación de Transportación Regional para el Valle de Mesilla