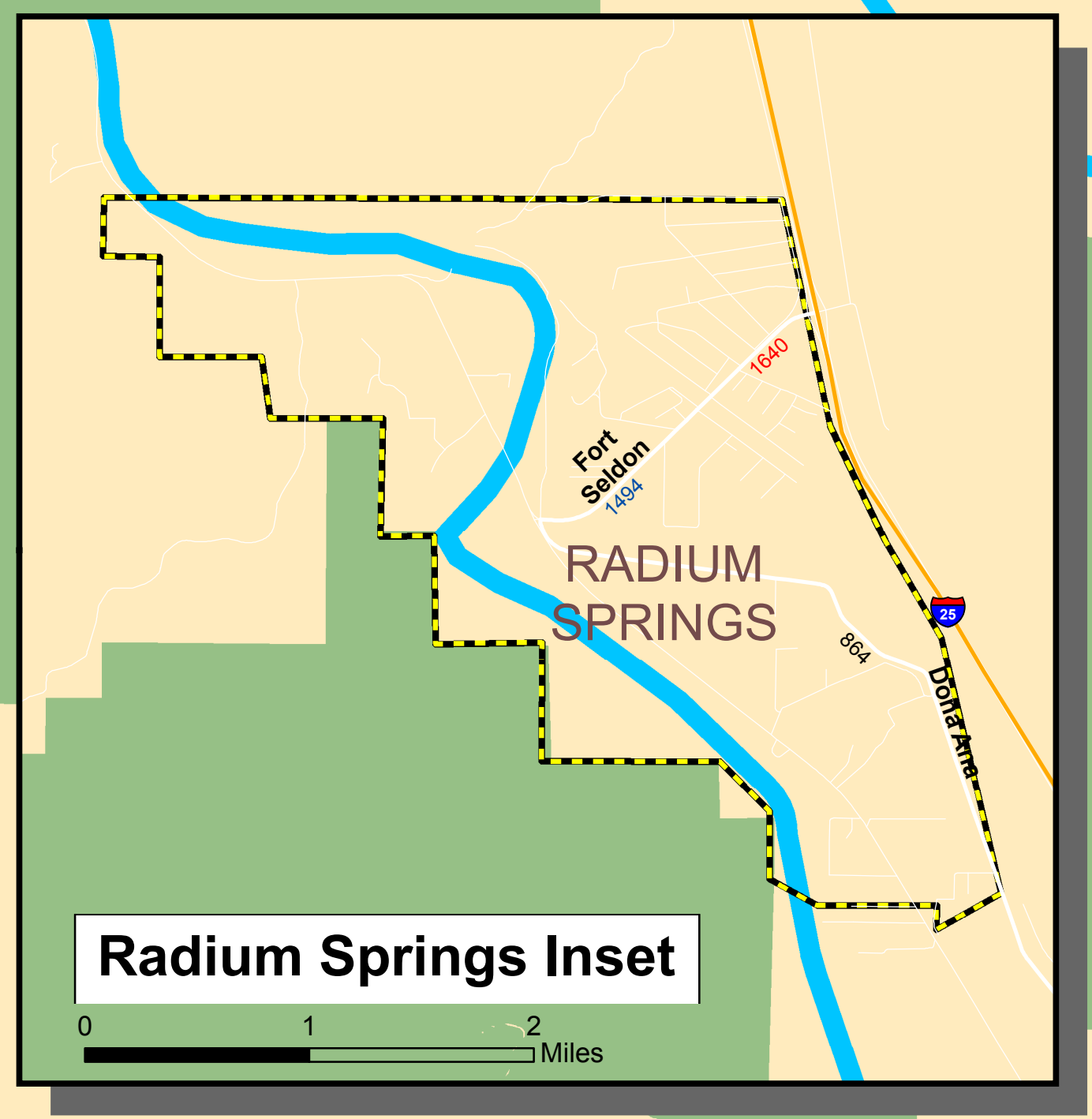


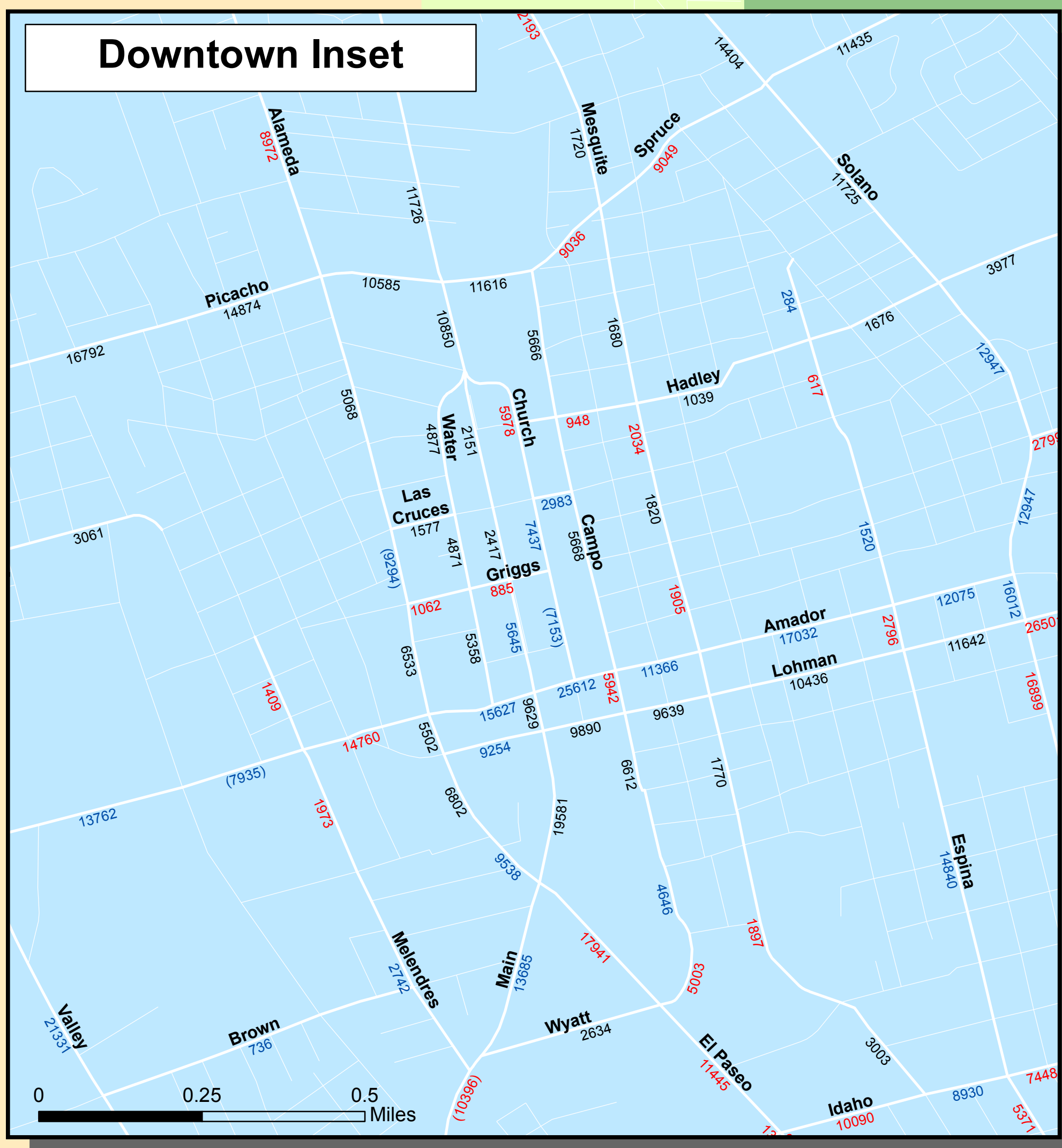
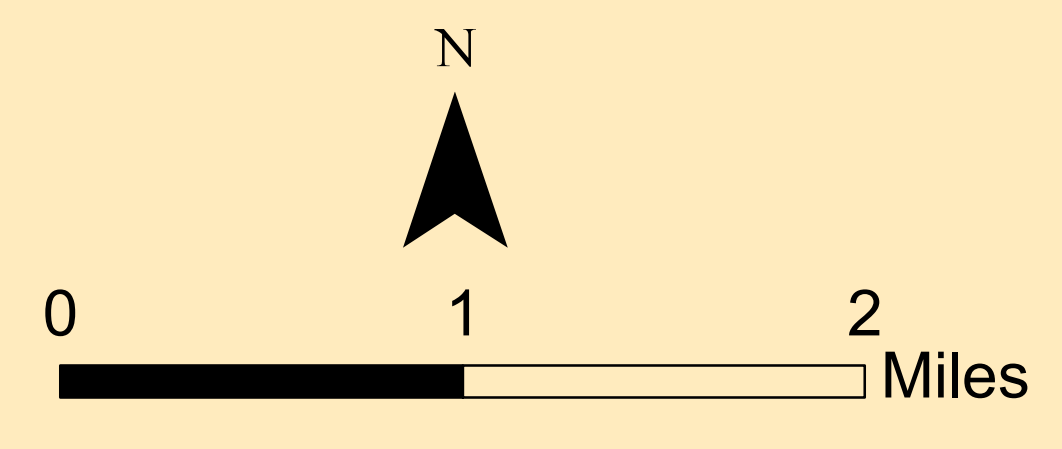


# Mesilla Valley Metropolitan Planning Organization 2013 TRAFFIC FLOW MAP

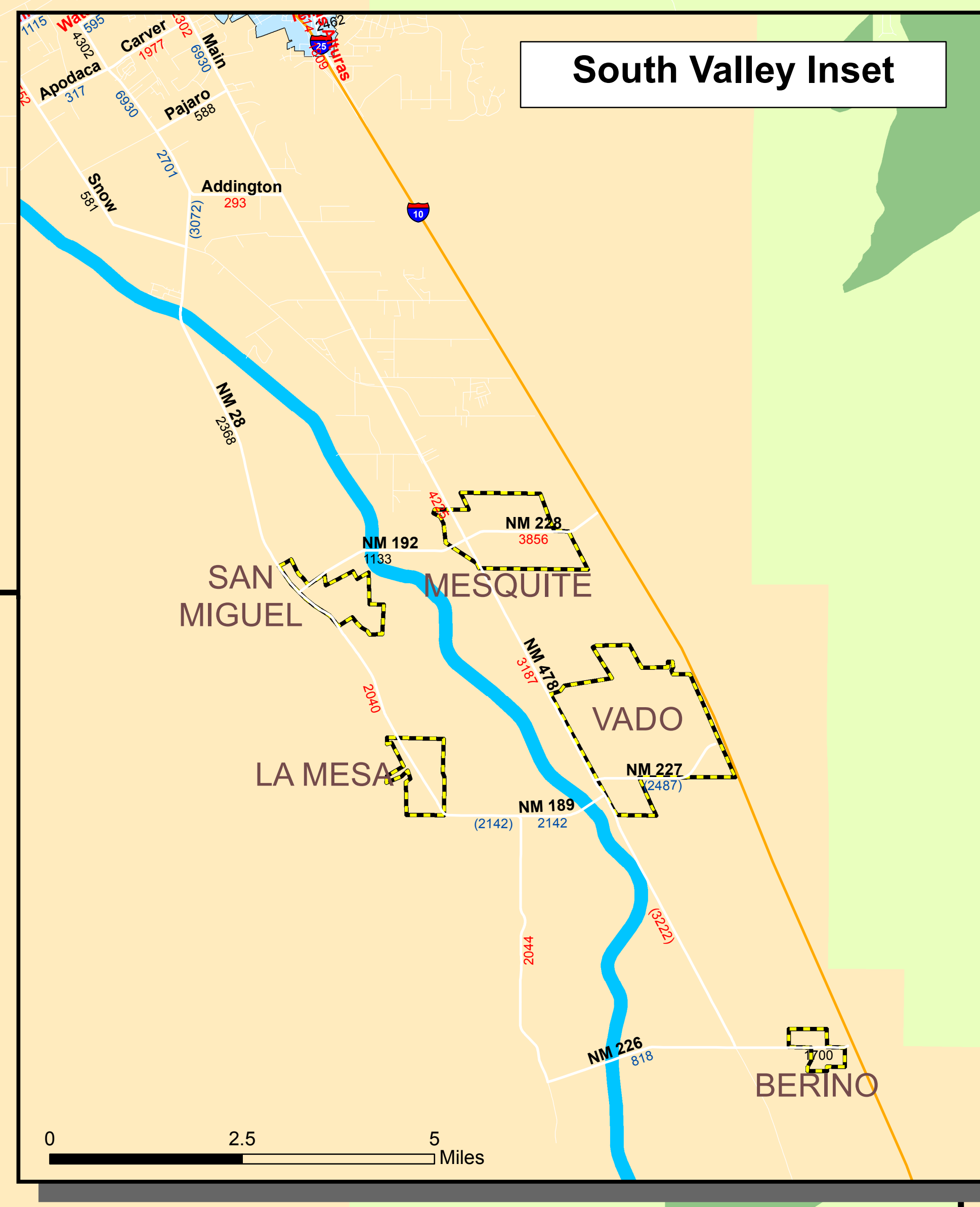
See Radium Springs Inset Map



- Legend**
- Counted in 2013
  - Counted in 2012
  - Counted in 2011 or prior
  - Interstates Not Counted
  - MPO Boundary
  - Unincorporated Areas
  - Dona Ana County
  - City of Las Cruces
  - Town of Mesilla
  - New Mexico State University
  - BLM Wilderness Area
  - BLM Recreational Management Area
  - Rio Grande



See Downtown Inset Map



See South Valley Inset Map

**ANNUAL AVERAGE WEEKDAY TRAFFIC (AAWDT) OF THE LAS CRUCES URBANIZED AREA**

Average Annual Weekday Traffic (AAWDT) volumes are based on traffic count data accepted by the New Mexico Department of Transportation Traffic Monitoring System (TMS) as standard in accordance with the New Mexico State Traffic Monitoring Standards (NMSTMS).

AAWDT volumes in PARENTHESES are traffic counts gathered during a specific 48-hour time period. The counts have not been seasonally adjusted in accordance with NMSTMS. NMDOT recommends that non-standard data be used with caution.

2008 NMSTMS - Standard 34.0  
Each year at least one-third of all traffic sections of factor groups, which are grouped by functional classification of collector or better, will be counted.

The preparation of this report has been financed in part through grant[s] from the Federal Highway Administration and Federal Transit Administration, U.S. Department of Transportation, under the State Planning and Research Program, Section 505 [or Metropolitan Planning Program, Section 104(f)] of Title 23, U.S. Code. The contents of this report do not necessarily reflect the official views or policy of the U.S. Department of Transportation.

MAP PREPARED BY MESILLA VALLEY METROPOLITAN PLANNING ORGANIZATION

