

SEE
INSET
MAP
"D"
EAST
MESA

SEE
INSET
MAP
"A"
WEST
MESA

ANNUAL AVERAGE WEEKDAY TRAFFIC (AAWD)
1997 TRAFFIC FLOW MAP
 OF THE
LAS CRUCES URBANIZED AREA

Map prepared by City of Las Cruces Technical Support G.I.S./Drafting for the
 Las Cruces Metropolitan Planning Organization
 Mesilla Dona Ana County Las Cruces
 MAILING ADDRESS: P.O. BOX 20000 LAS CRUCES, NEW MEXICO 88004
 STREET ADDRESS: 575 S. ALAMEDA BLVD LAS CRUCES, NEW MEXICO 88005
 PHONE NUMBER: (505) 528-3222

NOTES:

- Node indicates the end of a segment where the segment intersects an un-counted cross street.

Counted in 1997 (RED)	Counted in 1996 (GREEN)	Counted Prior to 1996 (BLACK)
AAWD1-XXXXX	AAWD1-XXXXX	AAWD1-XXXXX

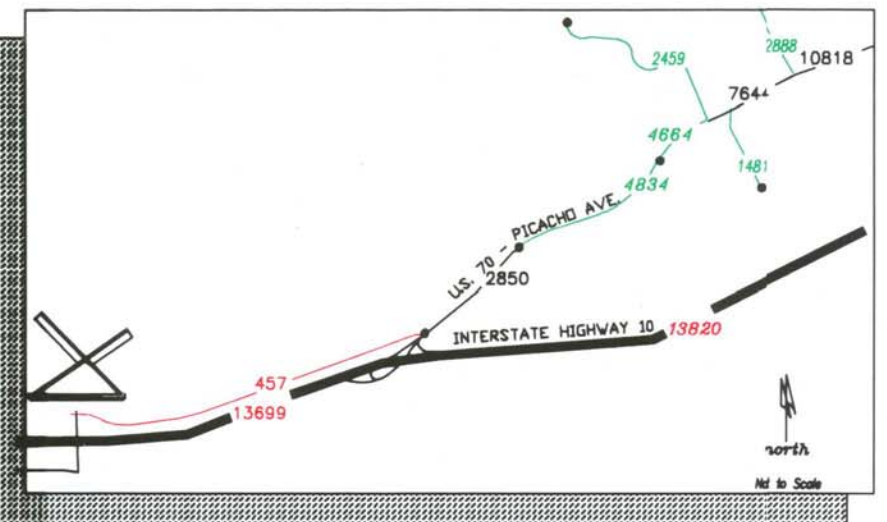
AAWD VOLUMES ARE BASED ON TRAFFIC COUNT DATA ACCEPTED BY THE NMSHD TRAFFIC MONITORING SYSTEM (TMS) AS STANDARD IN ACCORDANCE WITH THE NEW MEXICO STATE TRAFFIC MONITORING STANDARDS (NMSHMS)

AAWD volumes in italics are based on traffic count data not in accordance with (NMSHMS). NMSHD recommends that non-standard data be used with caution.

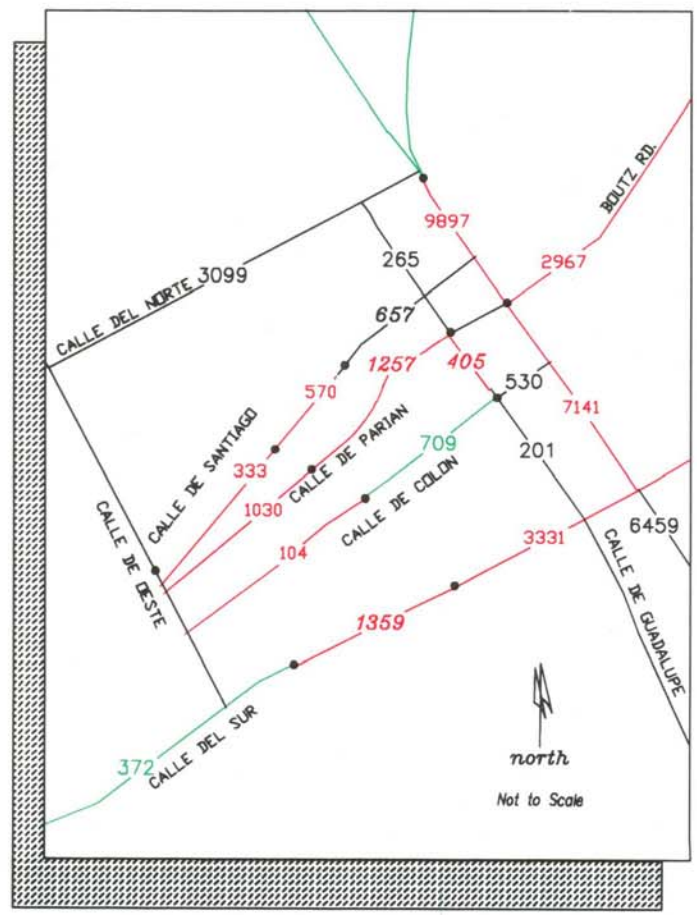
1996 NMSHMS - Standard 34.0:
 "Each year one-third of the...coverage count sample... will be counted, so that each site will be counted at least once in a three year period."

All areas on the map fall within the MPO Planning Area Boundary, which coincides with the Las Cruces 5-Mile E.T.Z. Boundary.

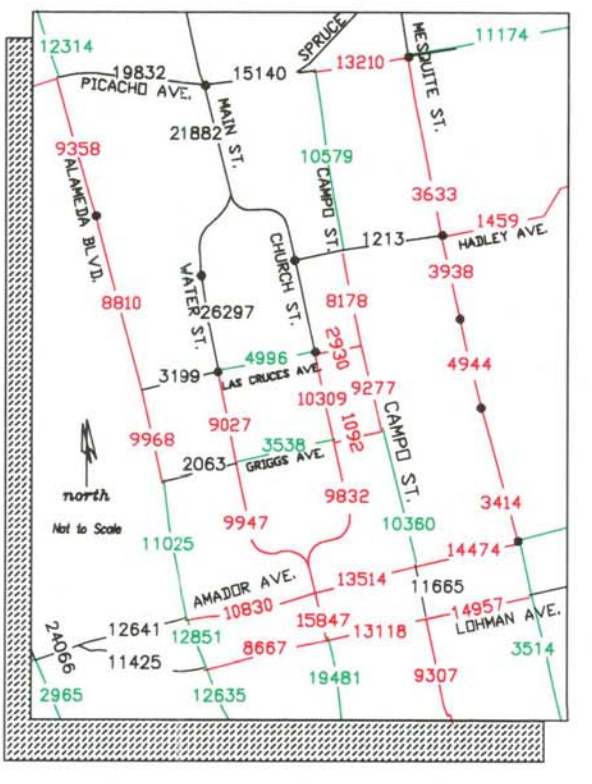
INSET MAP A - WEST MESA



INSET MAP B - MESILLA



INSET MAP C - DOWNTOWN MALL



INSET MAP D - EAST MESA

